



**COUNTY OF FLUVANNA, VIRGINIA**  
**(IFB) #2018-01**  
**FARM HERITAGE MUSEUM BARN**

**ADDENDUM # 1:**

Reference – Invitation for Bid: IFB #2018-01  
Title of Request for Proposal: FARM HERITAGE MUSEUM BARN  
Issue Date: August 30, 2017  
Bid Due Date and Time: October 23, 2017 at 2 p.m. EST

The above IFB #2018-01 is hereby amended and modified as follows:

1. Please see attached marked up site plan that clarifies parts of this site plan are not included in this project. The only items on the opposite side of the driveway from the building location, that are to be included is a Row of 10, crush and run/21A gravel, spaces, including 2 Handicap Accessible Parking spaces, ADA accessible route and signage.
2. Please note that work hours are Monday thru Friday park hours of sun up to sun down. If needed, weekend work can be scheduled and approved by the Director of Parks and Rec. and is contingent on any pre-planned public use.
3. Additional fill dirt can be used from a "Borrow" pile on the property, however, please note this site is approximately 0.7 mile from the build site. It will be the contractor's responsibility to load and transport.
4. The level spreaders for the Farm Museum will be constructed in accordance with standards from the Virginia E&S manual for "Level Spreader with Rigid Lip". This will require a wire mesh basket containing coarse aggregate to be installed on the down-stream side of each level spreader.

**Note: A signed acknowledgment of this addendum must be received at the location indicated on the IFB either prior to the bid due date and hour or attached to your bid. Signature on this addendum does not substitute for your signature on the original bid document. The original bid document must be signed.**

Very truly yours,

Cyndi Toler, Purchasing Officer  
Fluvanna County, Virginia  
132 Main Street  
Palmyra, VA 22963  
(434) 591-1930

Name of Firm: \_\_\_\_\_

BY: \_\_\_\_\_

Signature of duly authorized representative

Title: \_\_\_\_\_

Date: \_\_\_\_\_



EROSION & SEDIMENT CONTROL LEGEND

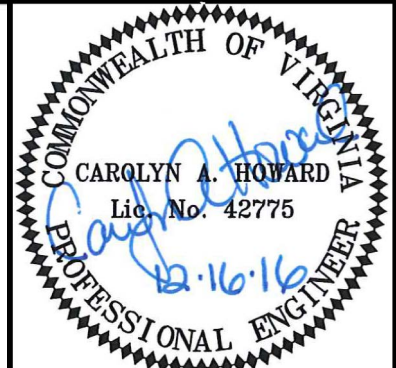
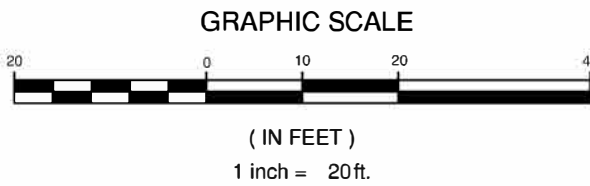
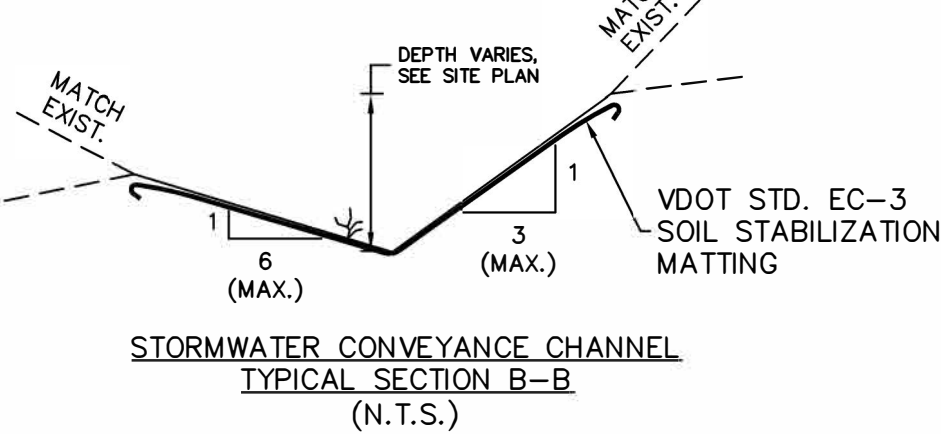
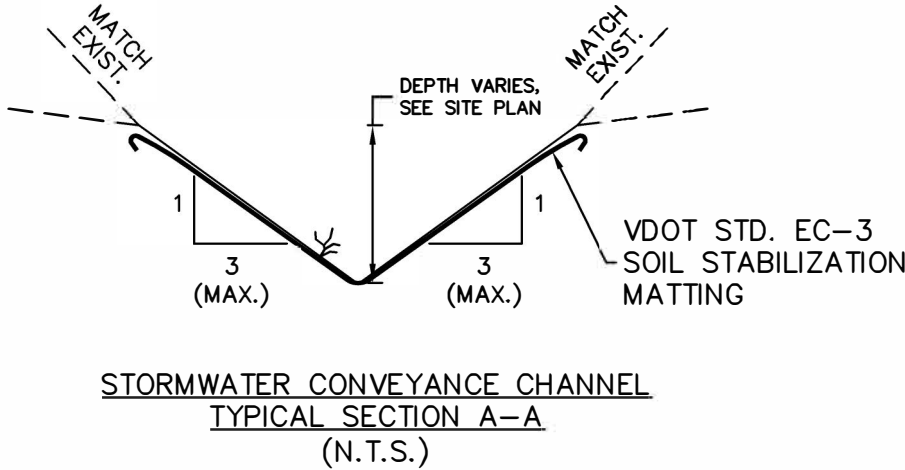
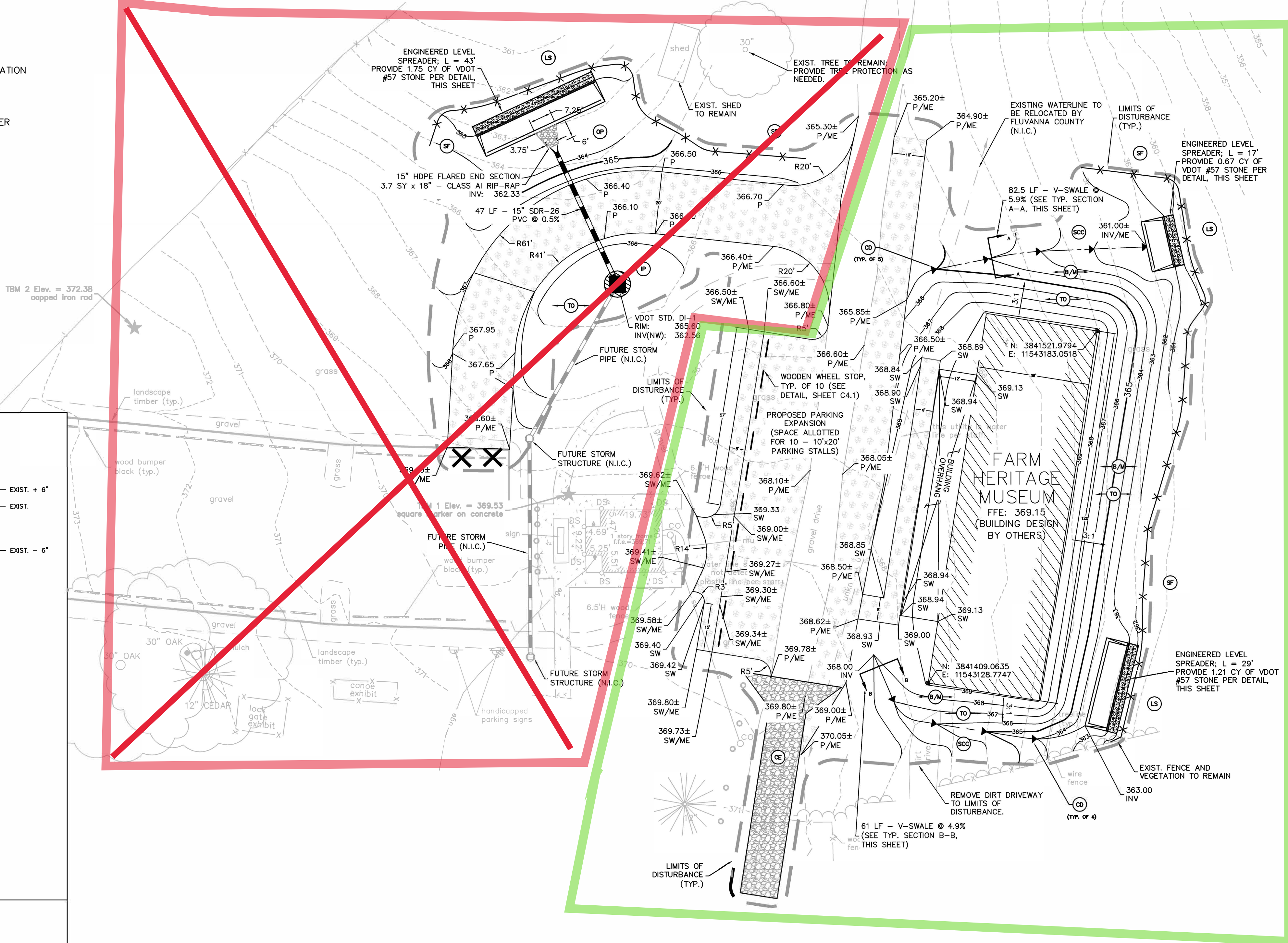
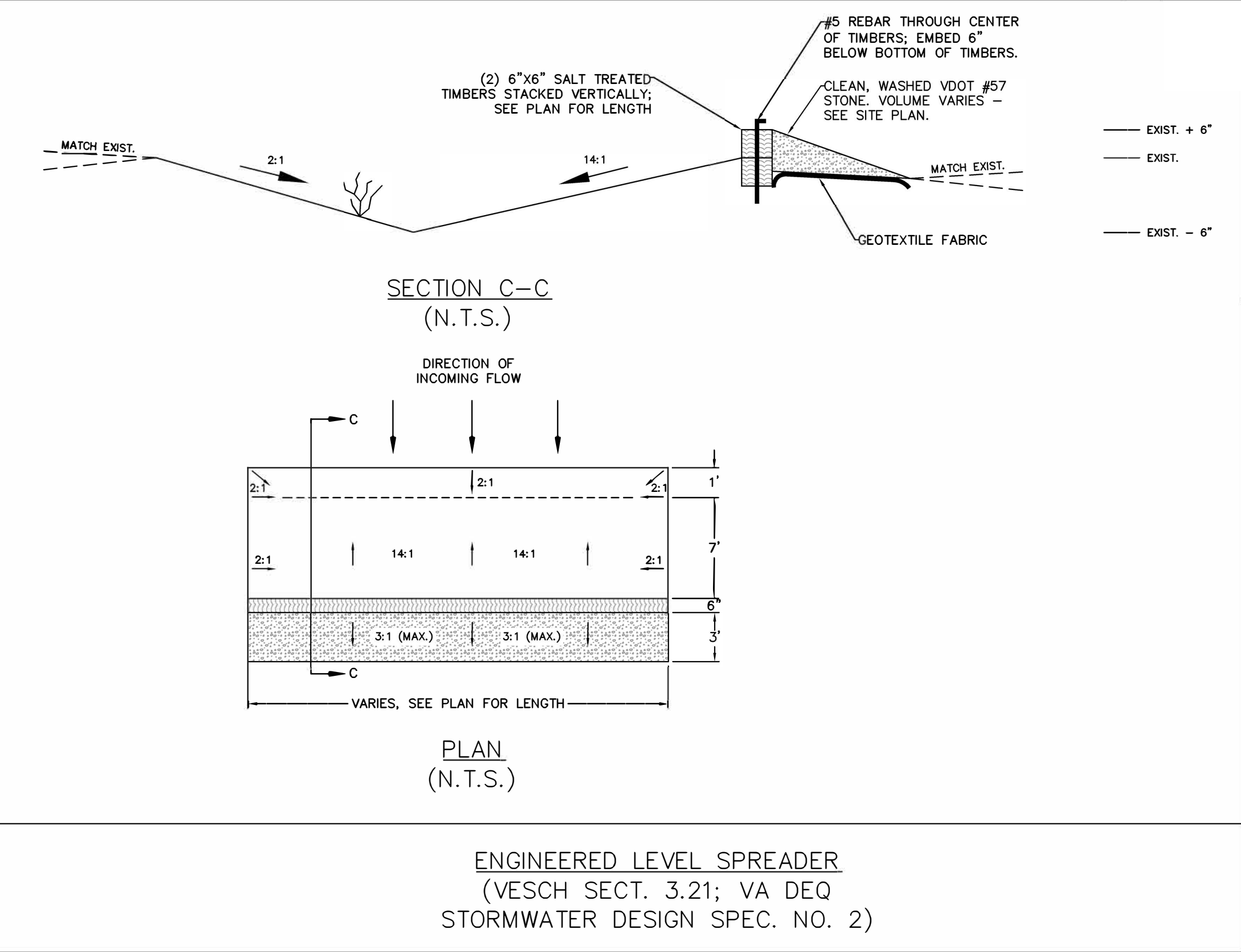
No.	TITLE	KEY	SYMBOL
3.02	TEMPORARY STONE CONSTRUCTION ENTRANCE	CE	
3.05	SILT FENCE	SF	
3.07	STORM DRAIN INLET PROTECTION	IP	
3.17	STORMWATER CONVEYANCE CHANNEL	SCC	
3.18	OUTLET PROTECTION	OP	
3.20	ROCK CHECK DAM	CD	
3.21	LEVEL SPREADER	LS	
3.30	TOPSOILING	TO	
3.31	TEMPORARY SEEDING (THROUGHOUT UNPAVED AREAS W/IN LIMITS OF DISTURBANCE)	TS	
3.32	PERMANENT SEEDING (THROUGHOUT UNPAVED AREAS W/IN LIMITS OF DISTURBANCE)	PS	
3.35	MULCHING (THROUGHOUT UNPAVED AREAS W/IN LIMITS OF DISTURBANCE)	MU	
3.36	SOIL STABILIZATION BLANKETS & MATTING	B/M	
3.39	DUST CONTROL (ENTIRE AREA W/IN LIMITS OF DISTURBANCE)	DC	

PAVEMENT & DEMOLITION LEGEND

- GRAVEL PARKING AND PATH (SEE SECTION, SHEET C5.1)
- REMOVE WOODEN WHEEL STOPS

GRADING LEGEND

- SW: GRAVEL PATH ELEVATION  
INV: SWALE INVERT ELEVATION  
G: GROUND ELEVATION  
P: GRAVEL ROAD/PARKING ELEVATION  
ME: MATCH EXISTING ELEVATION  
±: APPROXIMATE EXISTING ELEVATION; CONTACT ENGINEER IF ACTUAL FIELD ELEVATION VARIES BY ±1".



**Draper Aden Associates**  
Engineering • Surveying • Environmental Services

Charlottesville, VA  
110 Avon Street  
Charlottesville, VA 22902  
434-295-0700 Fax: 434-295-2105  
www.daa.com

Richmond, VA  
Blacksburg, VA  
Hampton Roads, VA  
Coats, NC  
Fayetteville, NC  
Northern Virginia

SITE PLAN  
FARM HERITAGE MUSEUM  
& PARKING LOT IMPROVEMENTS  
PALMYRA, VIRGINIA

REVISIONS
DESIGNED BY: CAH
DRAWN BY: CEP
CHECKED BY: CAH
SCALE: 1" = 20'
DATE: DECEMBER 16, 2016
PROJECT NUMBER: R13457C-11
C3.0