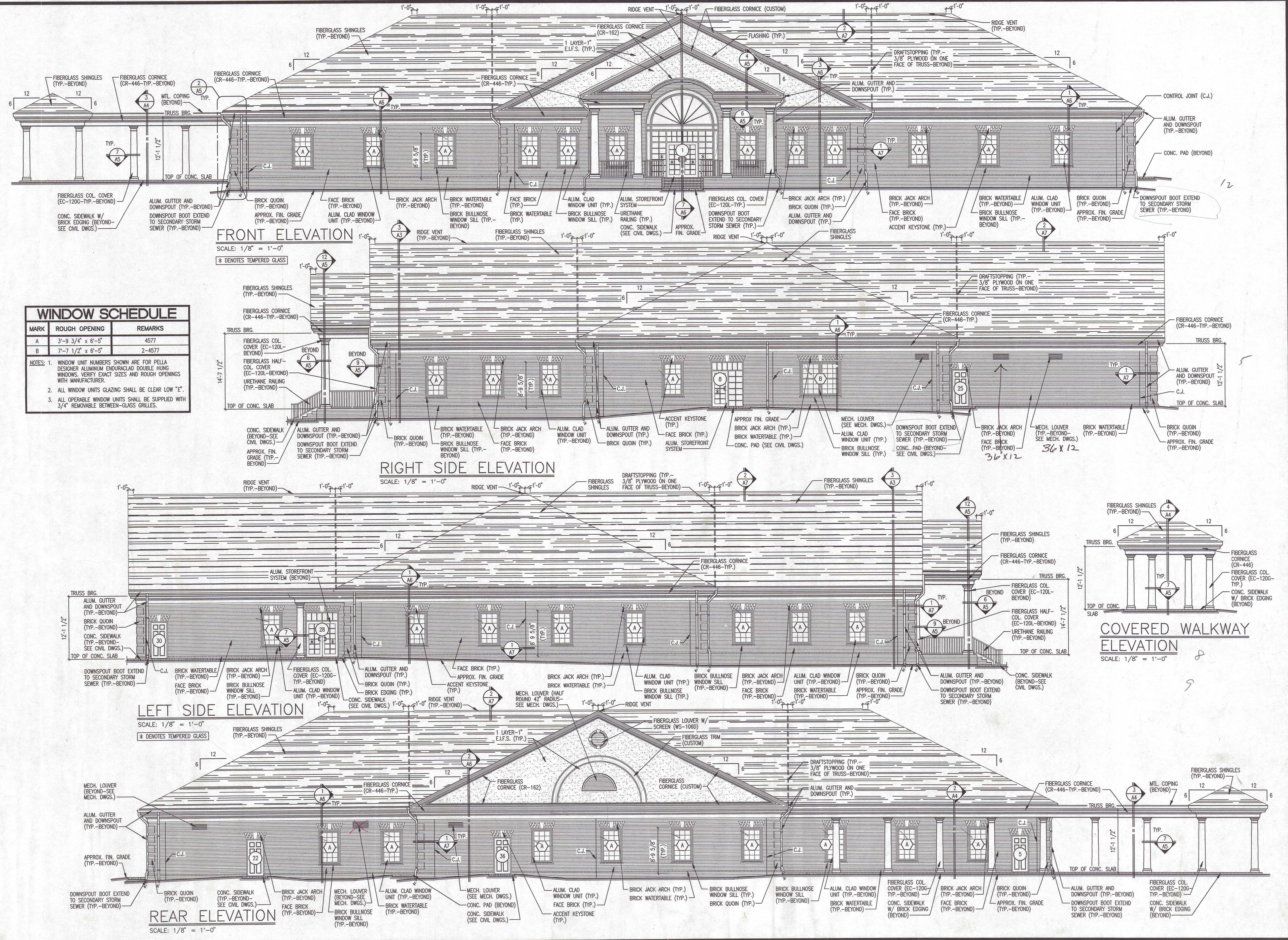


FLUVANNA COUNTY PUBLIC LIBRARY  
 FLUVANNA COUNTY, VIRGINIA  
 EXTERIOR ELEVATIONS  
 AND WINDOW SCHEDULE

**REYNOLDS ARCHITECTS INCORPORATED**  
 BLACKSBURG, VIRGINIA

DESIGNED	RA	DRAWN	DKW
CHECKED	GPR	APPROVED	GPR
PROJECT	0422	A2	
DATE	9-12-07		



### WINDOW SCHEDULE

MARK	ROUGH OPENING	REMARKS
A	3'-9 3/4" x 6'-5"	4577
B	7'-7 1/2" x 6'-5"	2-4577

NOTES:

- WINDOW UNIT NUMBERS SHOWN ARE FOR PELLA DESIGNER ALUMINUM ENDURACLAD DOUBLE HUNG WINDOWS. VERIFY EXACT SIZES AND ROUGH OPENINGS WITH MANUFACTURER.
- ALL WINDOW UNITS GLAZING SHALL BE CLEAR LOW "E".
- ALL OPERABLE WINDOW UNITS SHALL BE SUPPLIED WITH 3/4" REMOVABLE BETWEEN-GLASS GRILLES.

**FRONT ELEVATION**  
SCALE: 1/8" = 1'-0"

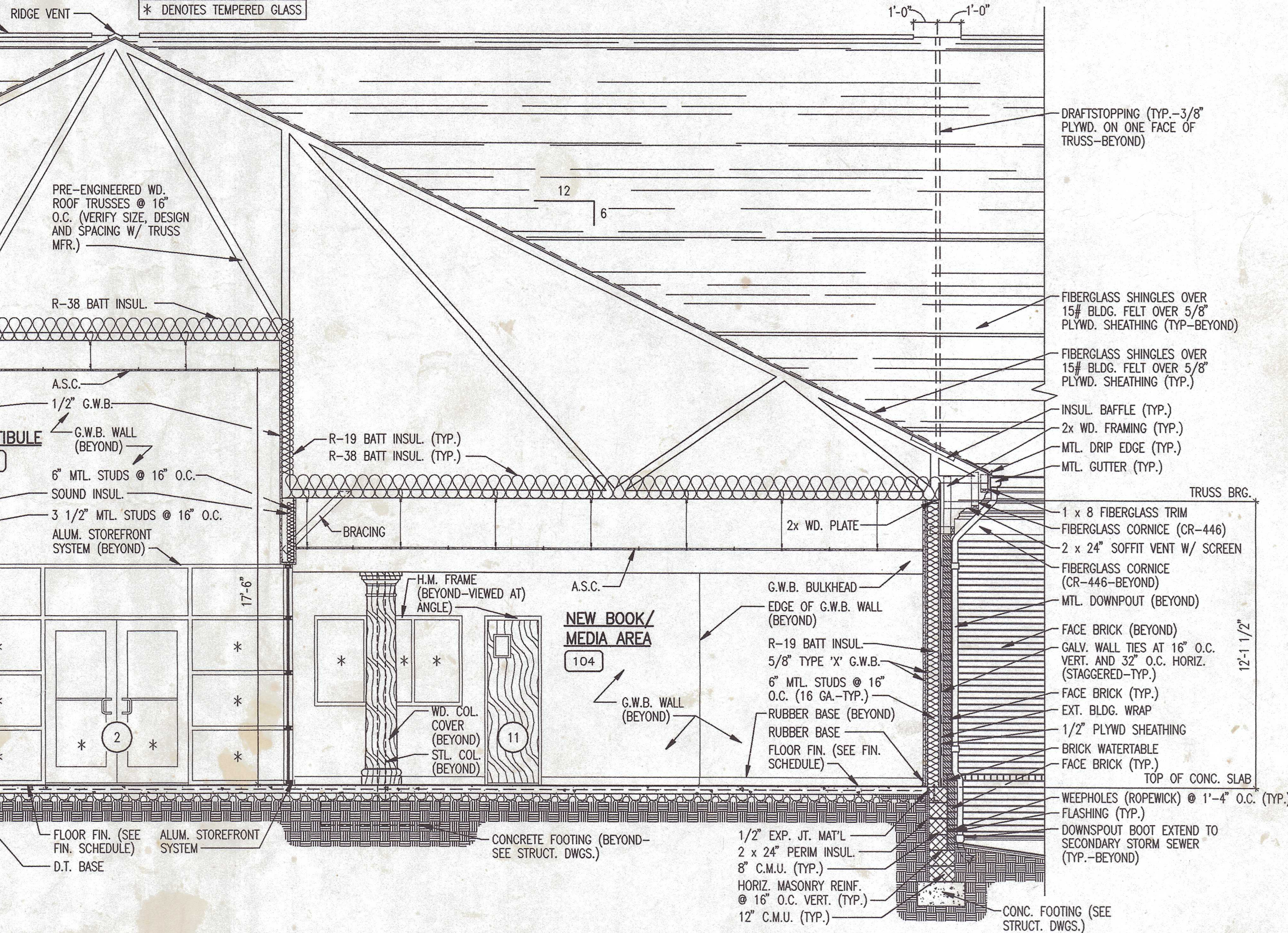
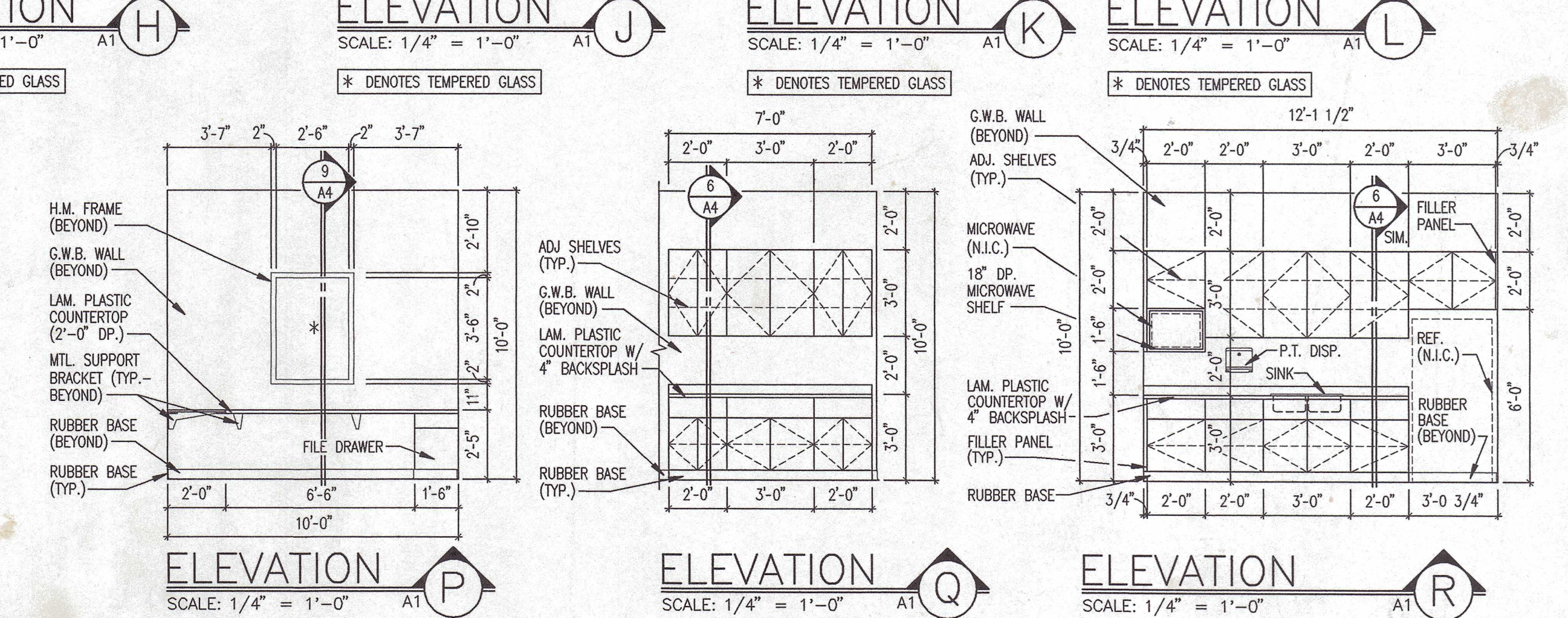
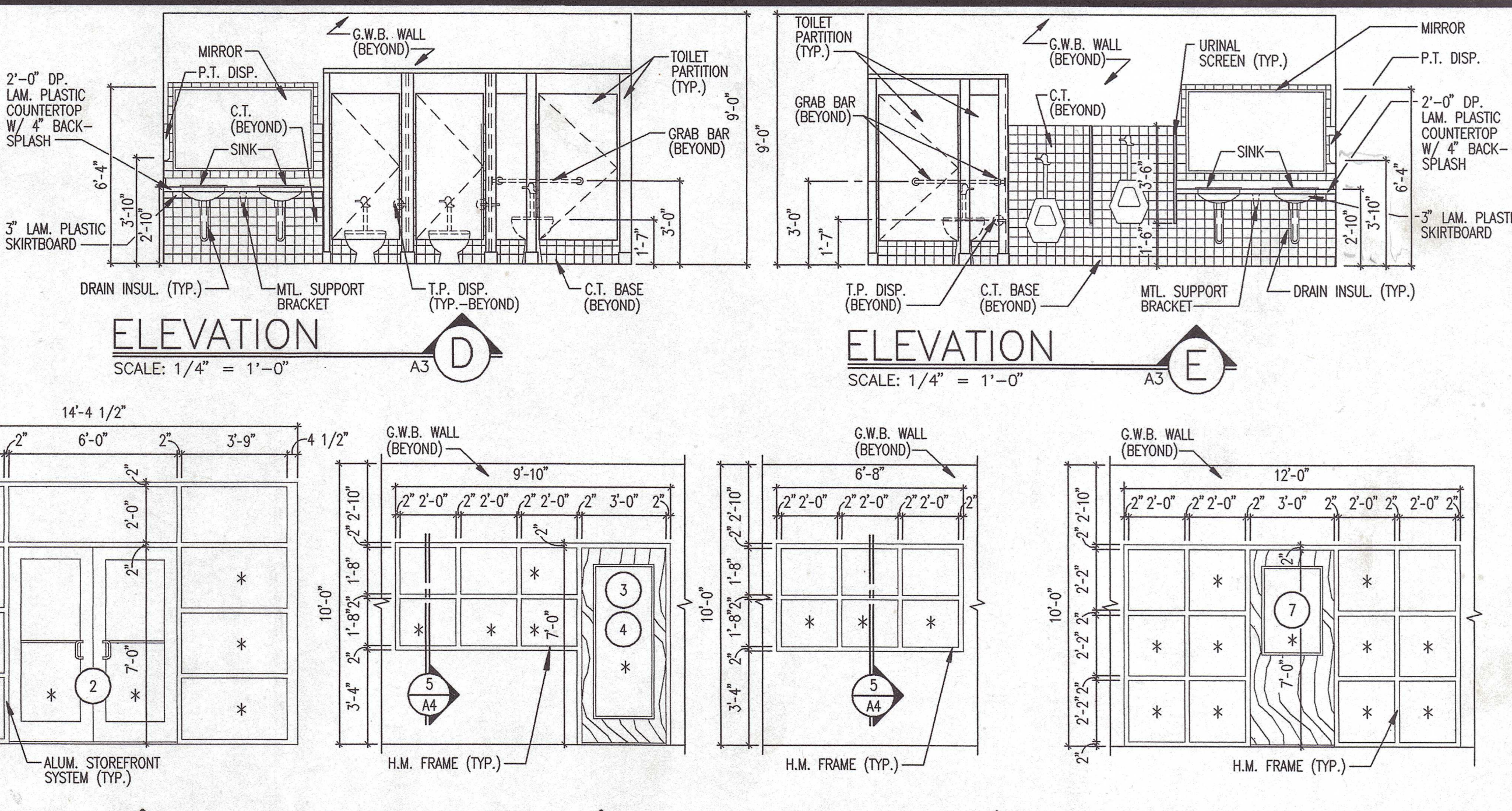
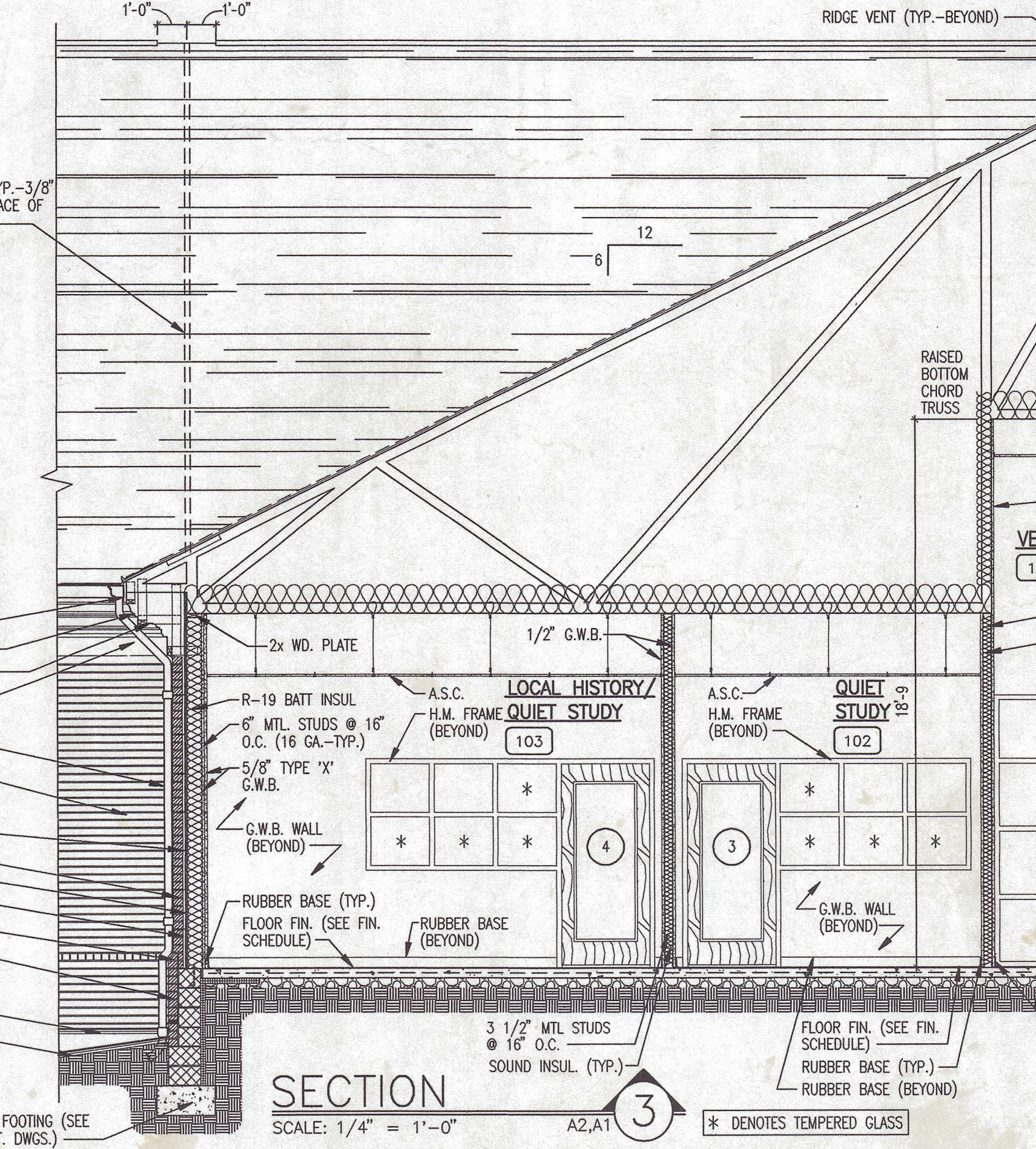
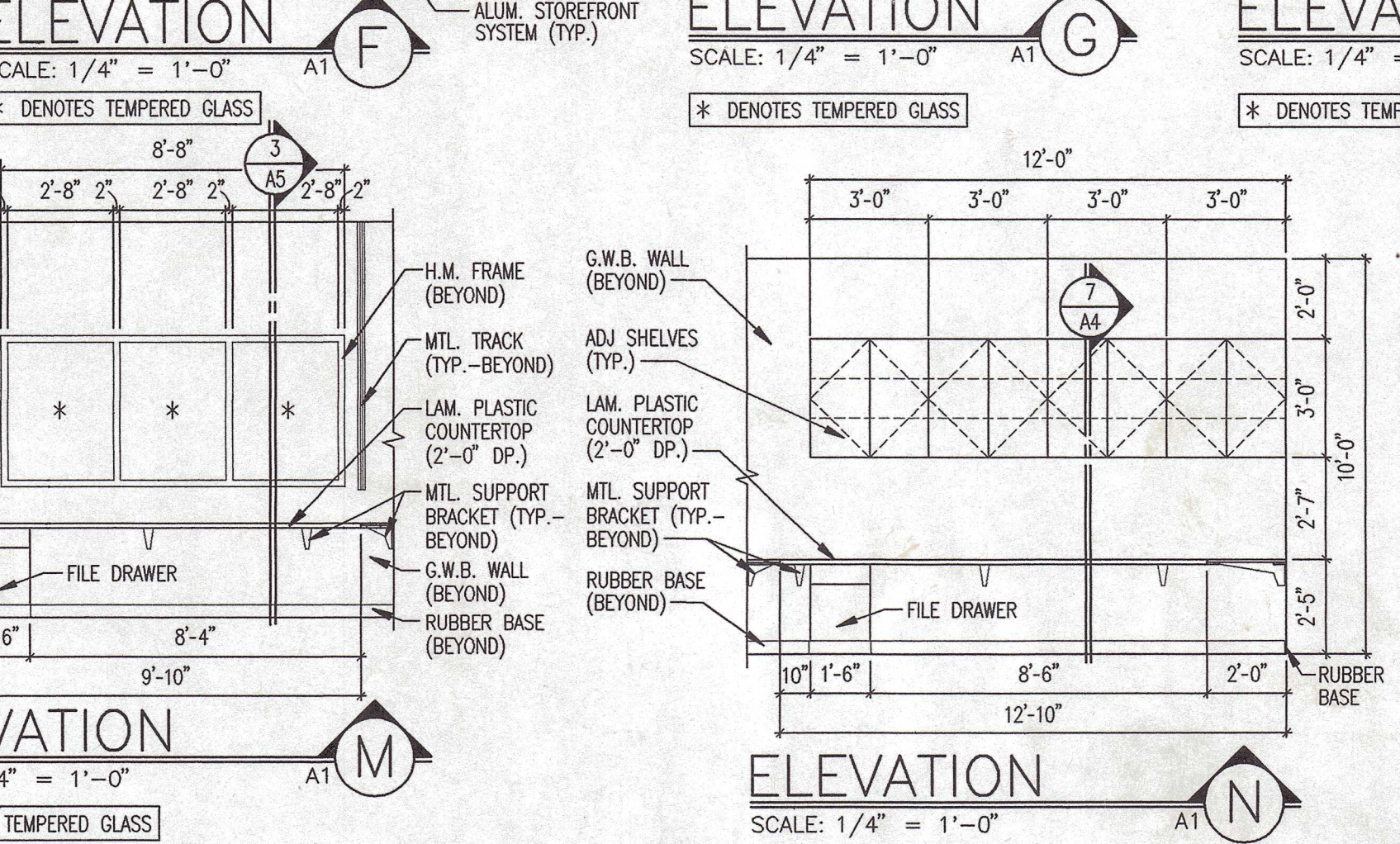
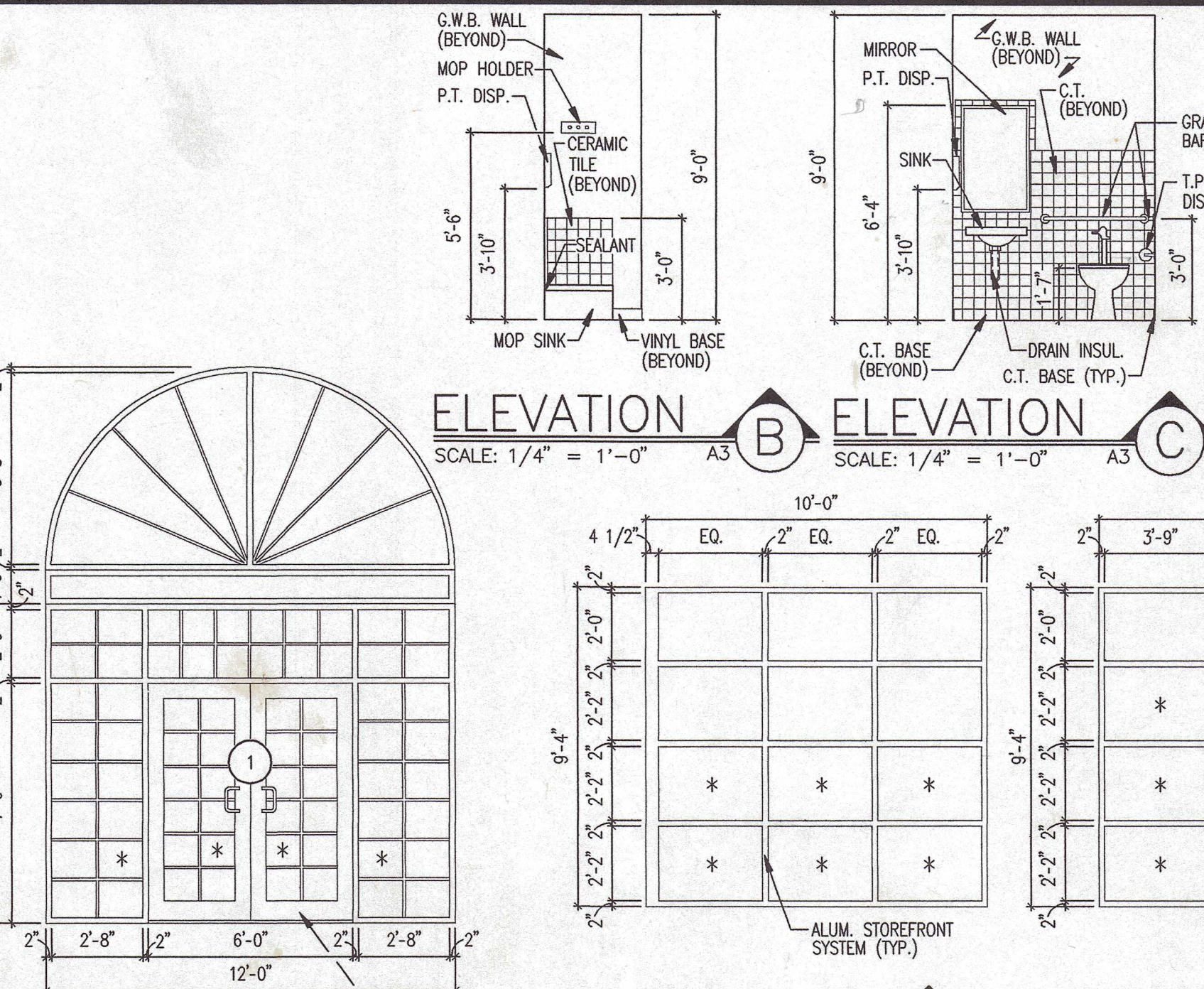
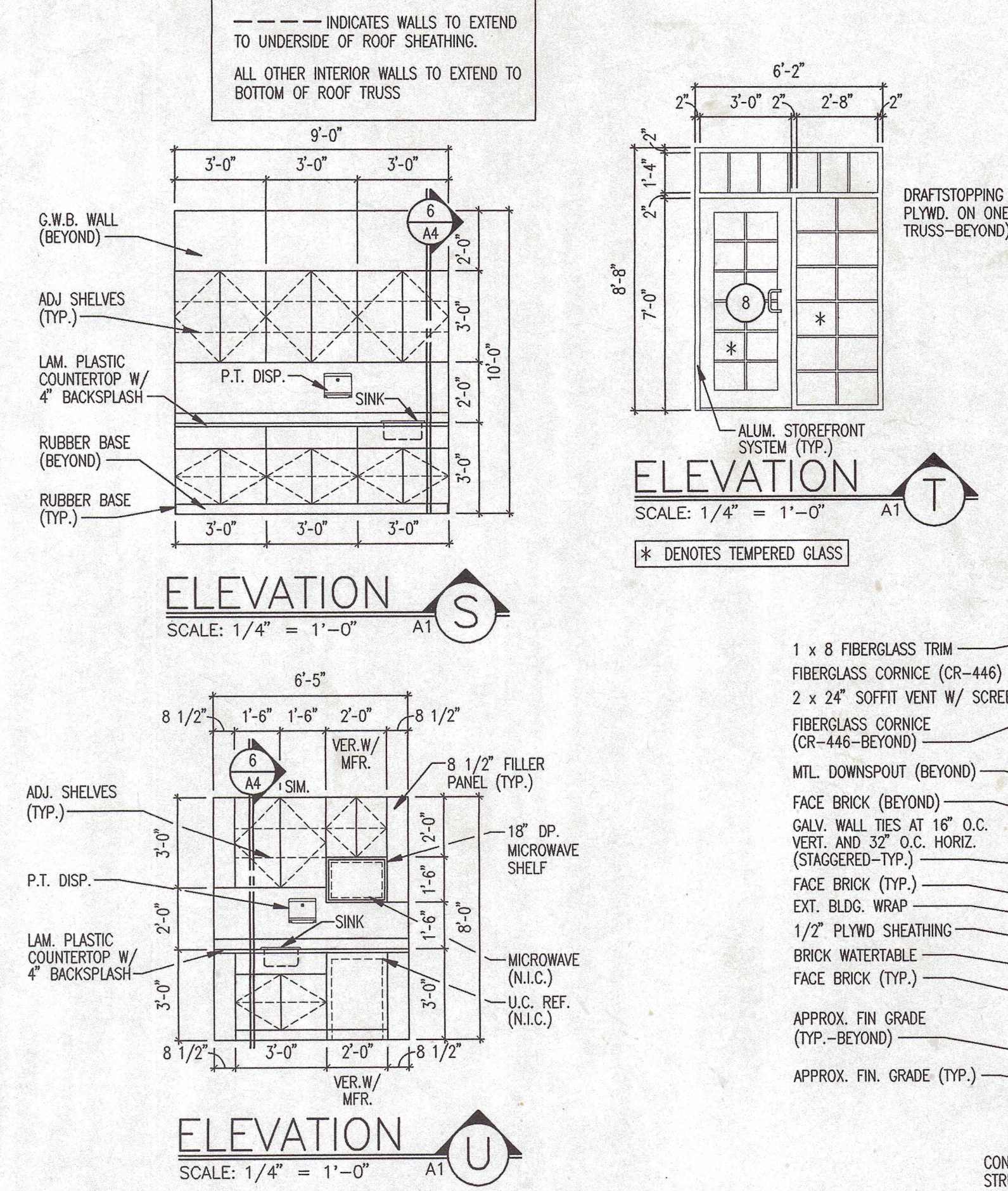
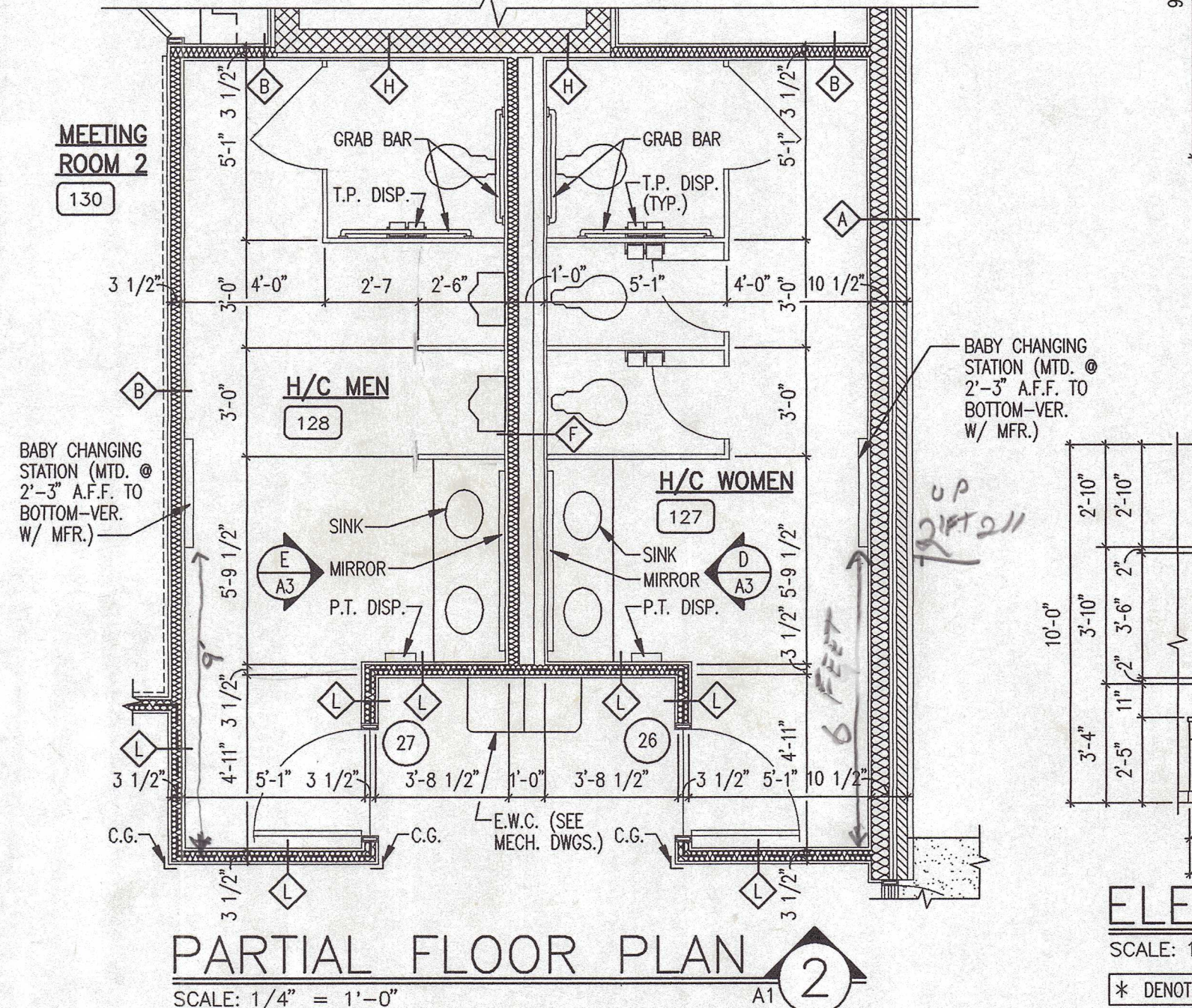
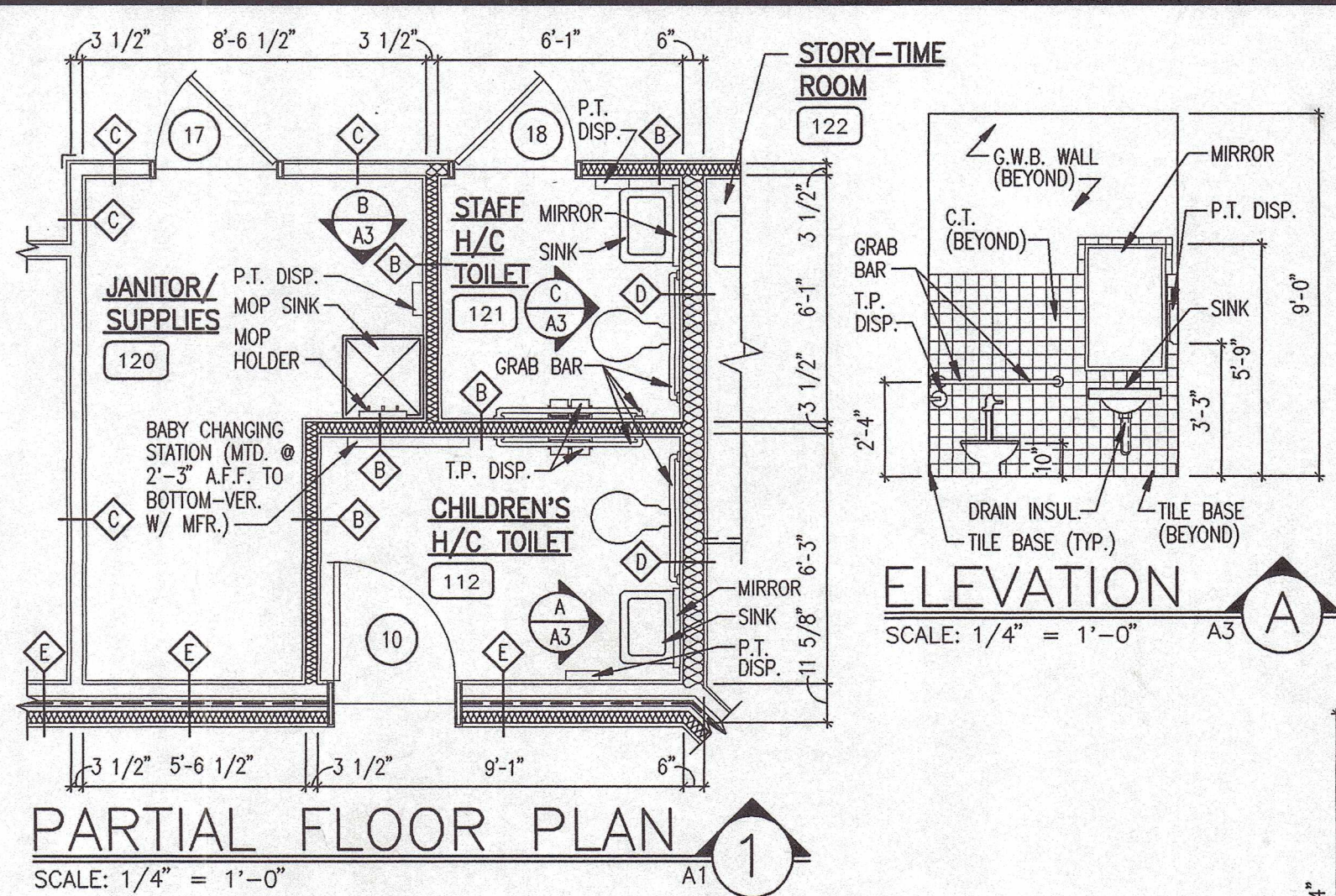
**RIGHT SIDE ELEVATION**  
SCALE: 1/8" = 1'-0"

**LEFT SIDE ELEVATION**  
SCALE: 1/8" = 1'-0"

**REAR ELEVATION**  
SCALE: 1/8" = 1'-0"

**COVERED WALKWAY ELEVATION**  
SCALE: 1/8" = 1'-0"





NO. REVISIONS DATE

GLENN P. REYNOLDS  
ARCHITECT  
4792

FLUVANNA COUNTY PUBLIC LIBRARY  
FLUVANNA COUNTY, VIRGINIA

PARTIAL FLOOR PLANS, INTERIOR  
ELEVATIONS AND SECTION

REYNOLDS ARCHITECTS INCORPORATED  
BLACKSBURG, VIRGINIA

DESIGNED RA DRAWN DKW  
CHECKED GPR APPROVED GPR  
PROJECT 0422  
DATE 9-12-07

A3





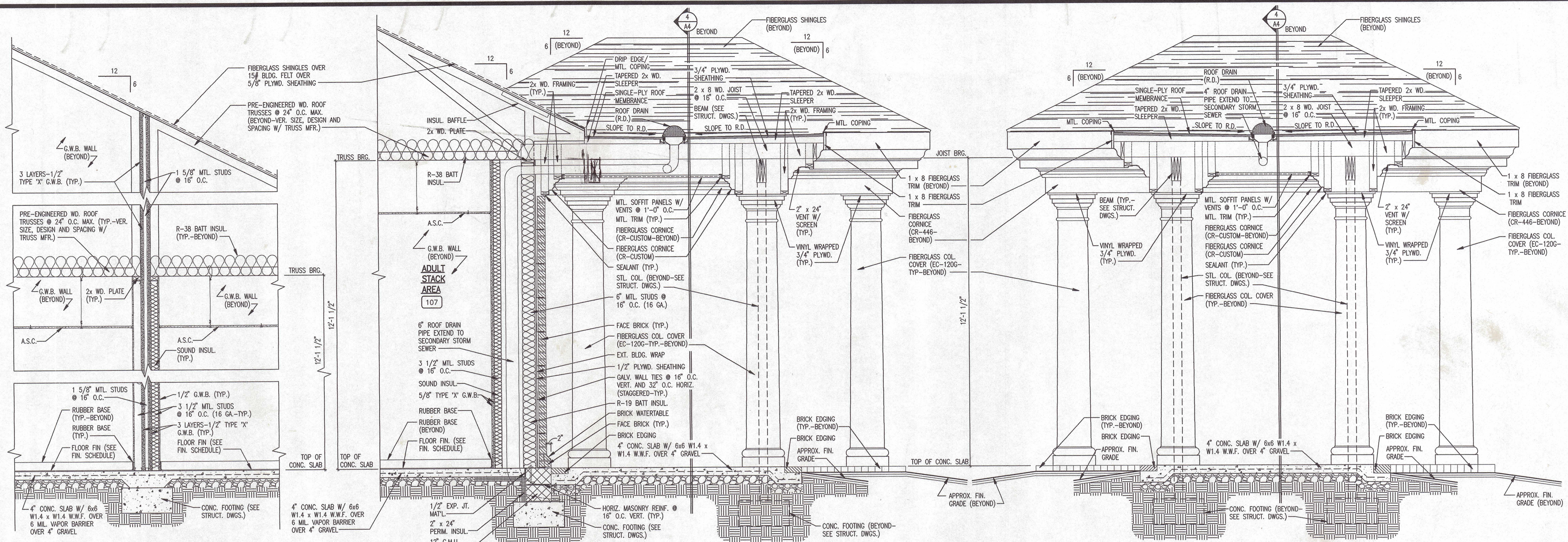
FLUVANNA COUNTY PUBLIC LIBRARY  
FLUVANNA COUNTY, VIRGINIA

SECTIONS

REYNOLDS ARCHITECTS INCORPORATED  
BLACKSBURG, VIRGINIA

DESIGNED	RA	DRAWN	ABC
CHECKED	GPR	APPROVED	GPR
PROJECT	0422		
DATE	9-12-07		

A4

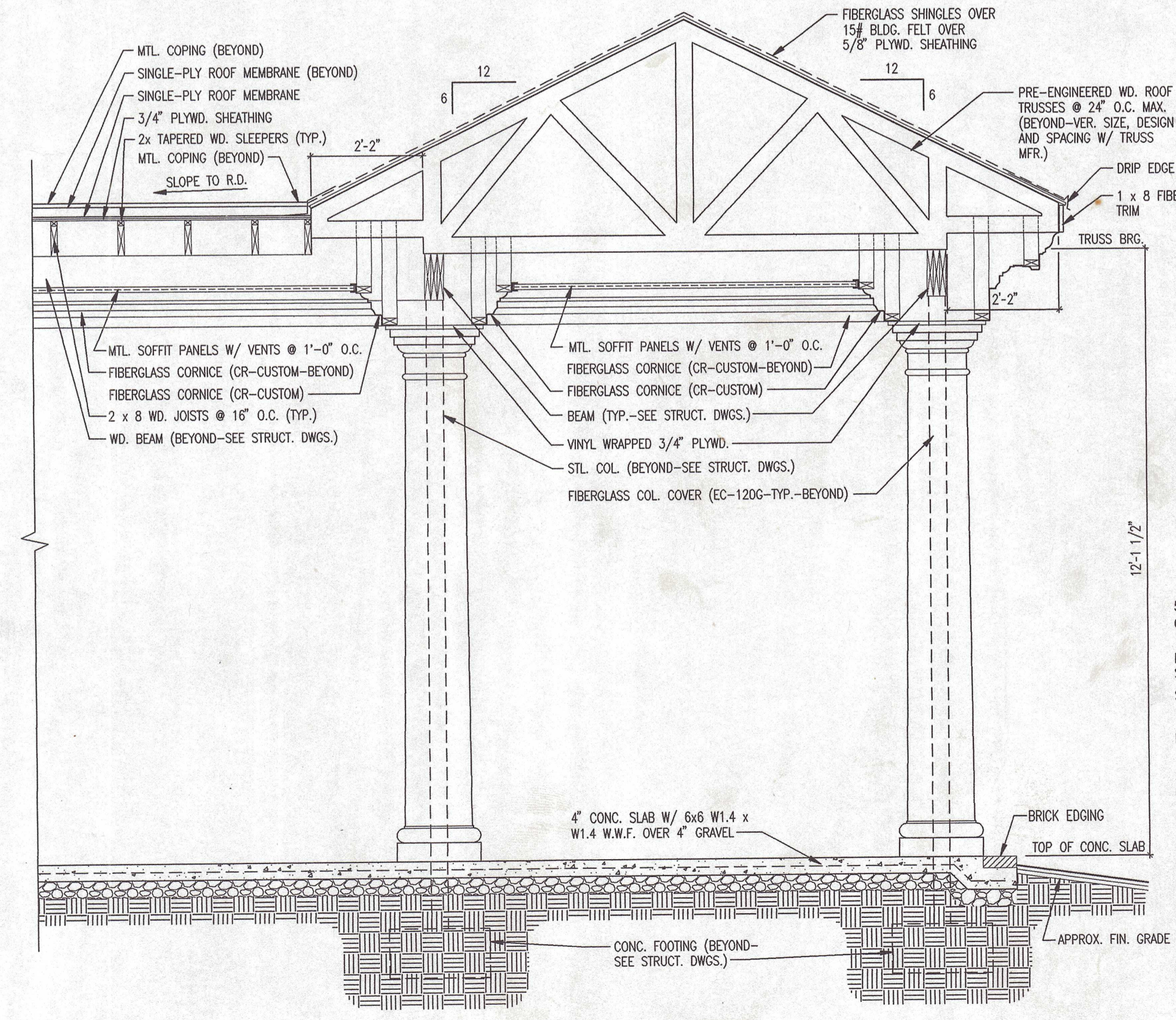


SECTION 1  
SCALE: 1/2" = 1'-0"

SECTION 2  
SCALE: 1/2" = 1'-0"

SECTION 3  
SCALE: 1/2" = 1'-0"

SECTION 8  
SCALE: 1/2" = 1'-0"



SECTION 4  
SCALE: 1/2" = 1'-0"

SECTION 5  
SCALE: 1/2" = 1'-0"

SECTION 6  
SCALE: 1/2" = 1'-0"

SECTION 7  
SCALE: 1/2" = 1'-0"

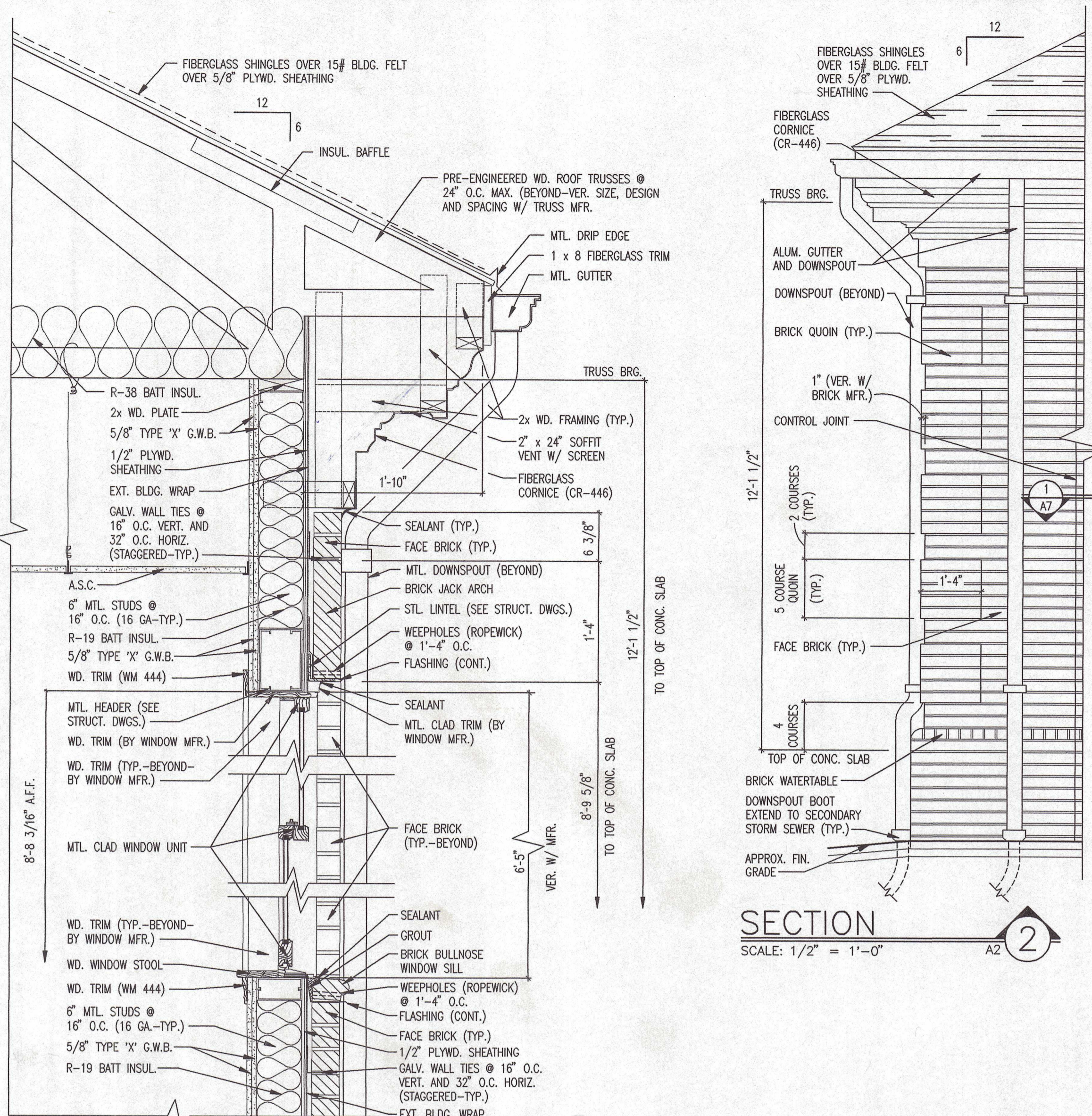
SECTION 9  
SCALE: 1/2" = 1'-0"

SECTION 10  
SCALE: 1/2" = 1'-0"

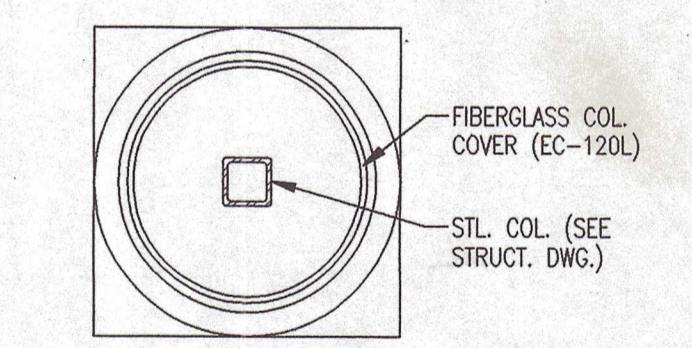
SECTION 11  
SCALE: 1/2" = 1'-0"

SECTION 12  
SCALE: 1/4" = 1'-0"

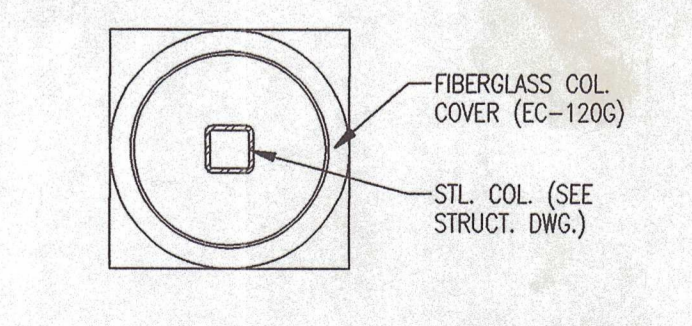




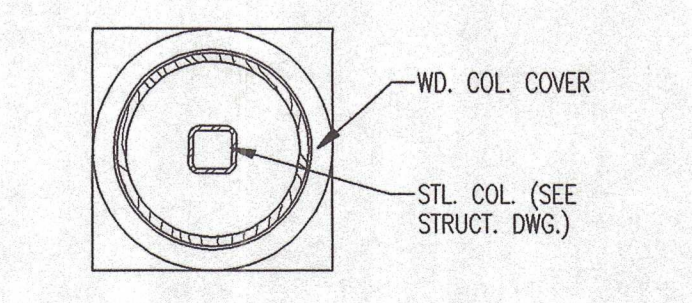
SECTION 1  
SCALE: 1" = 1'-0"



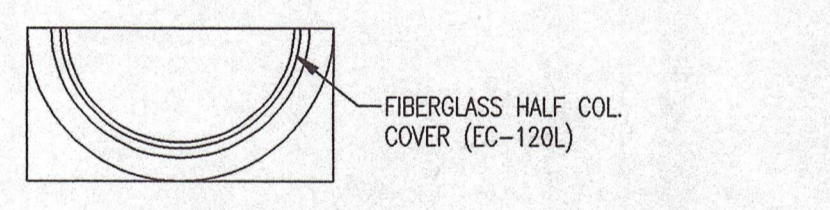
PLAN DETAIL 6  
SCALE: 3/4" = 1'-0"



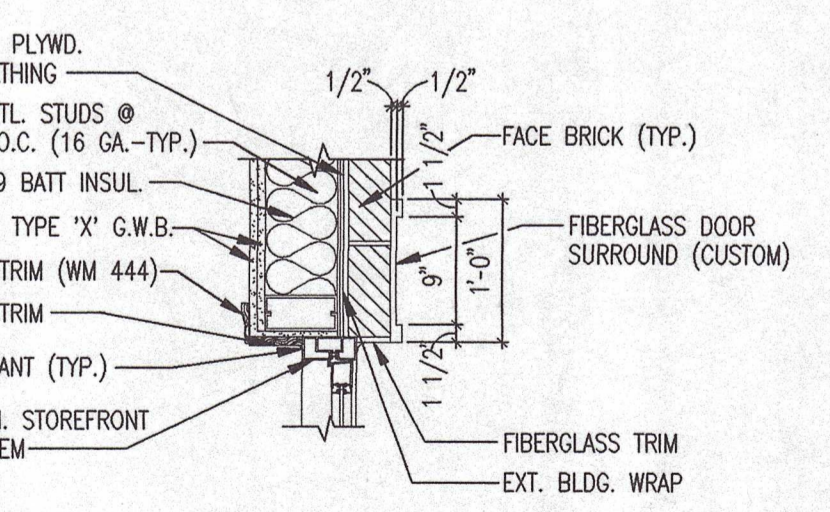
PLAN DETAIL 7  
SCALE: 3/4" = 1'-0"



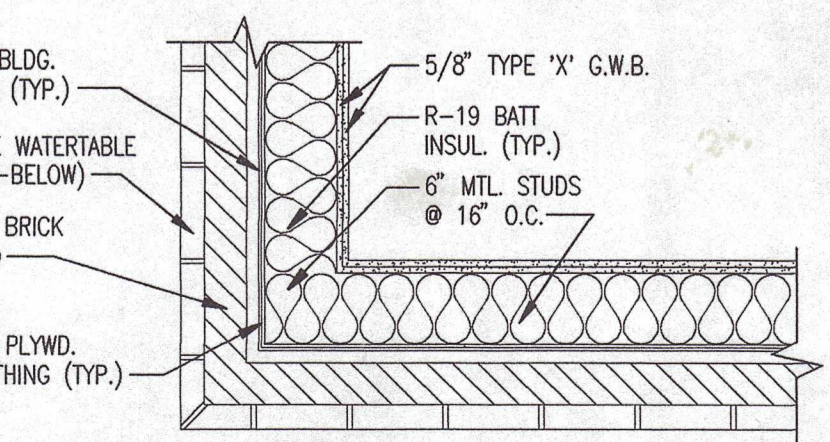
PLAN DETAIL 8  
SCALE: 3/4" = 1'-0"



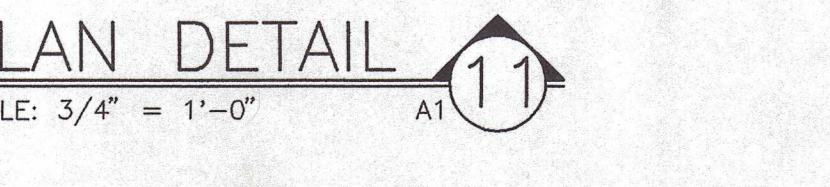
SCALE: 3/4" = 1'-0"



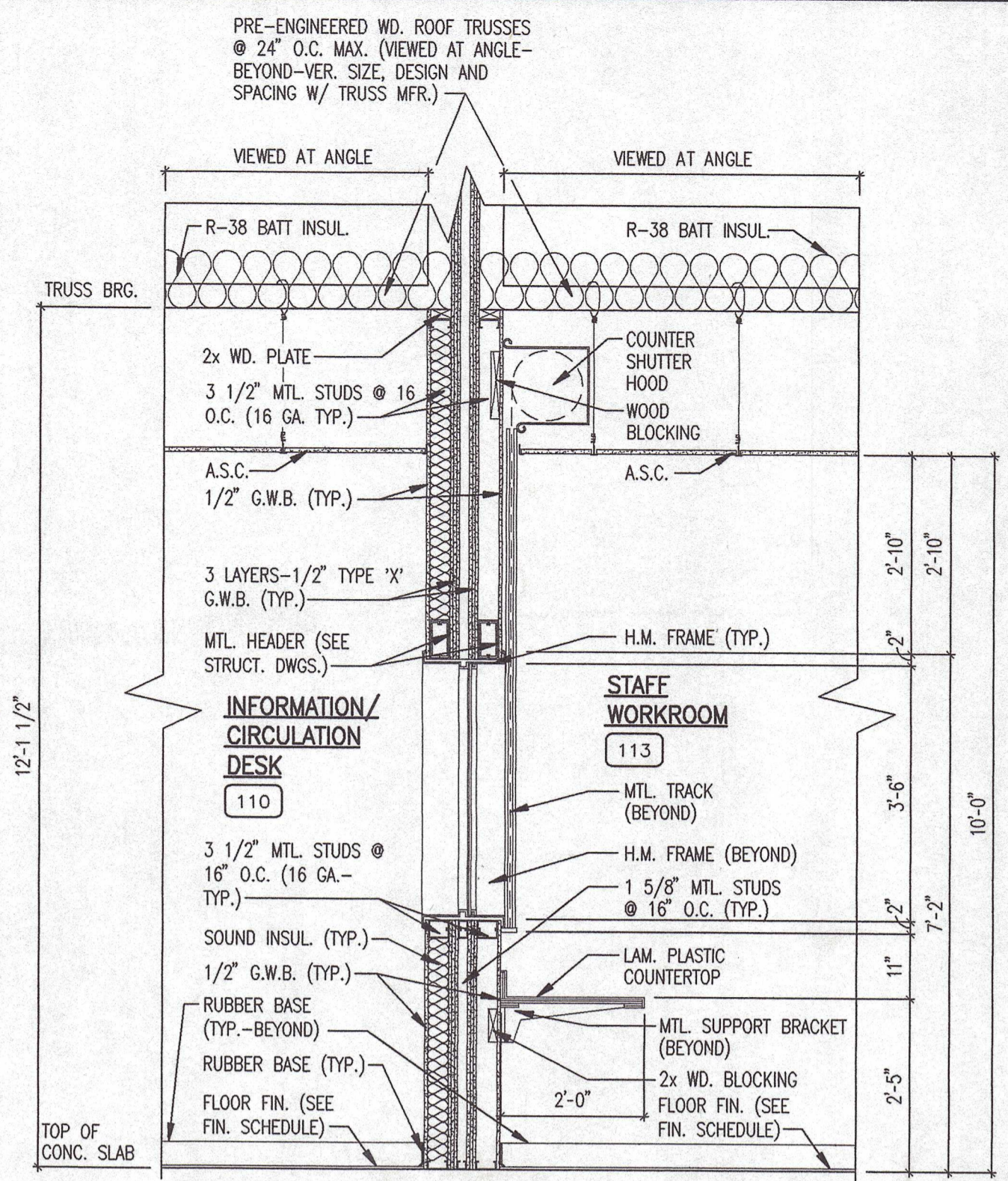
SECTION 9  
SCALE: 3/4" = 1'-0"



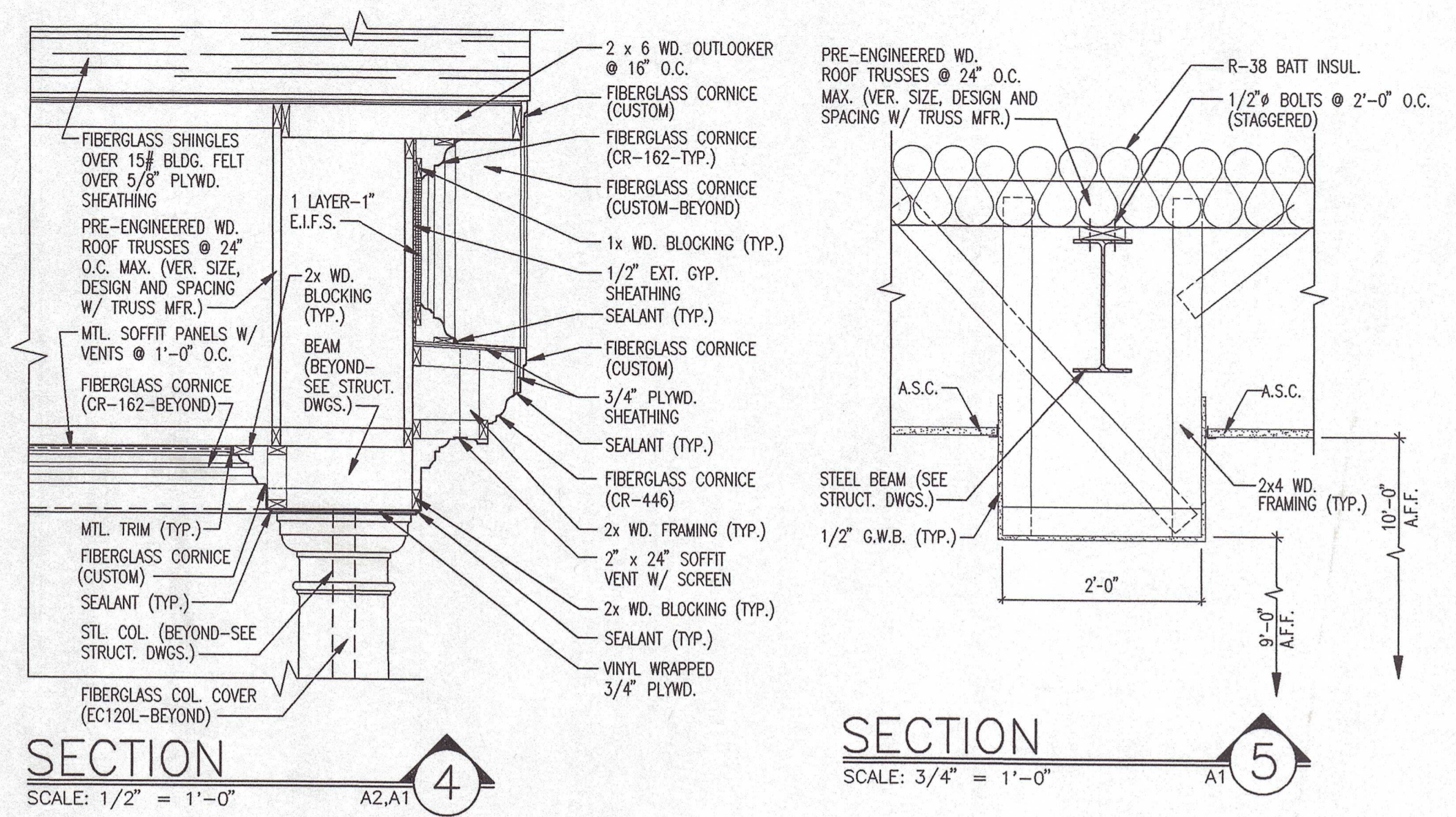
SECTION 10  
SCALE: 3/4" = 1'-0"



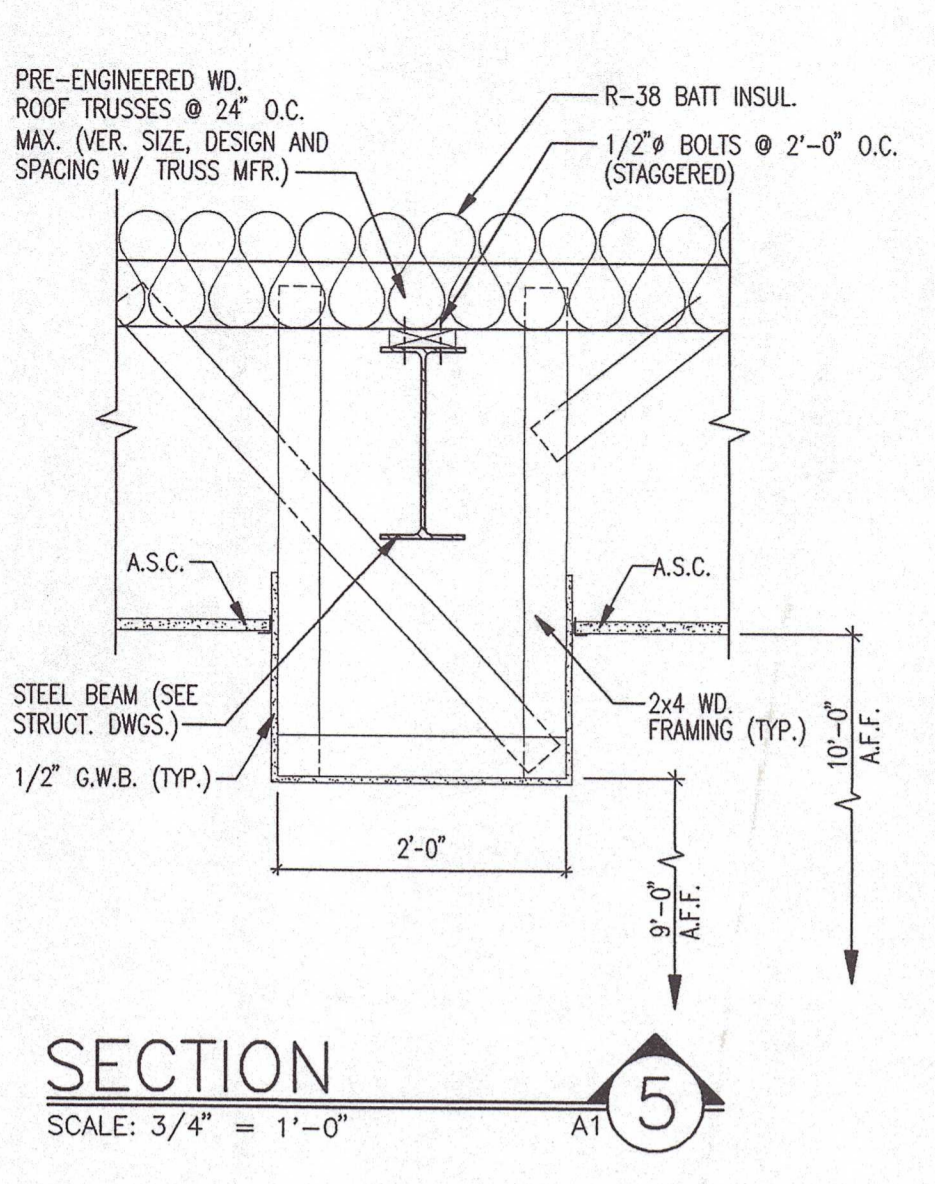
PLAN DETAIL 11  
SCALE: 3/4" = 1'-0"



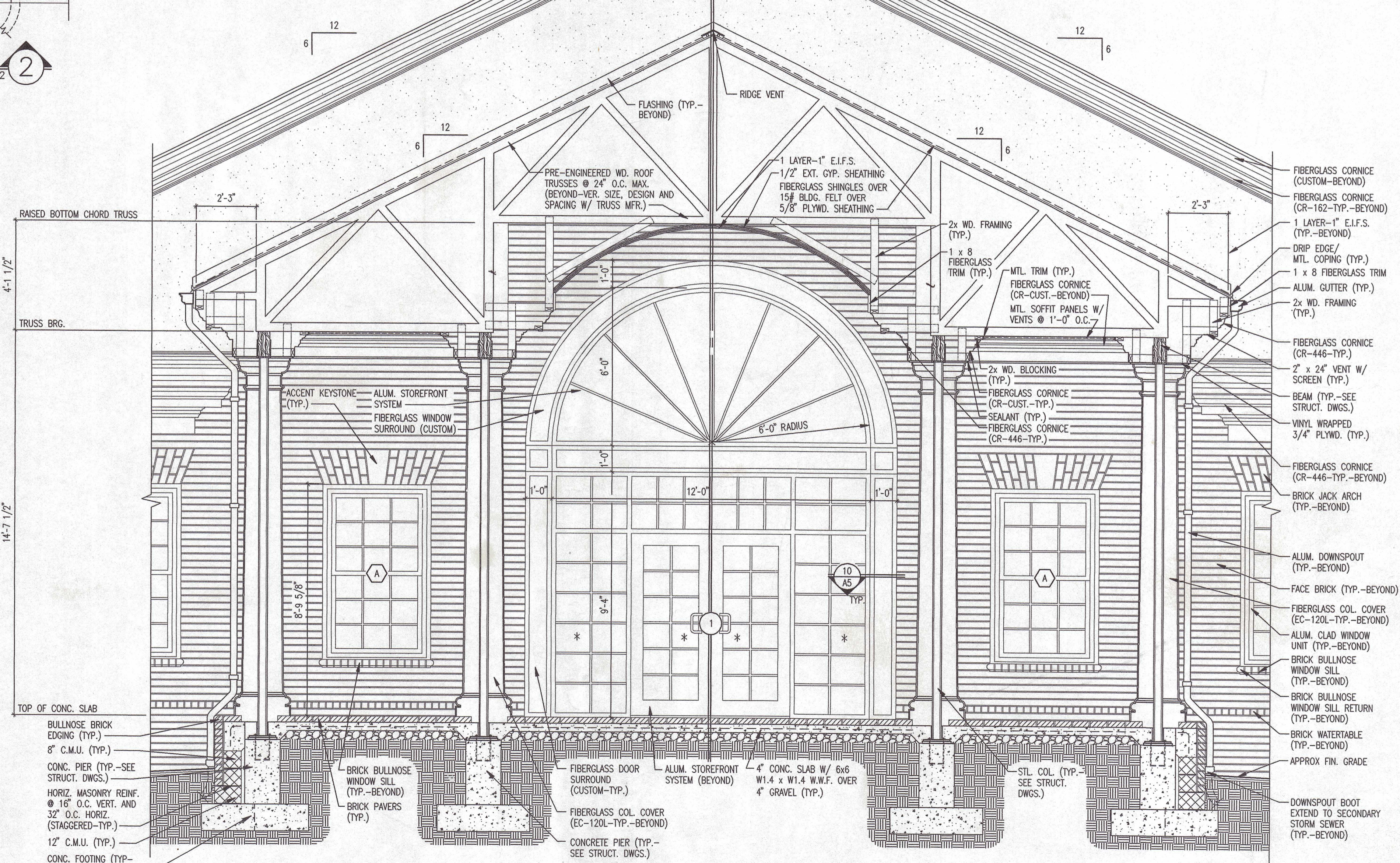
SECTION 3  
SCALE: 1/2" = 1'-0"



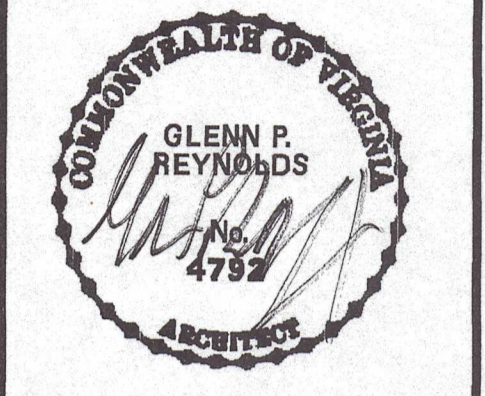
SECTION 4  
SCALE: 1/2" = 1'-0"



SECTION 5  
SCALE: 3/4" = 1'-0"



SECTION 12  
SCALE: 3/8" = 1'-0"



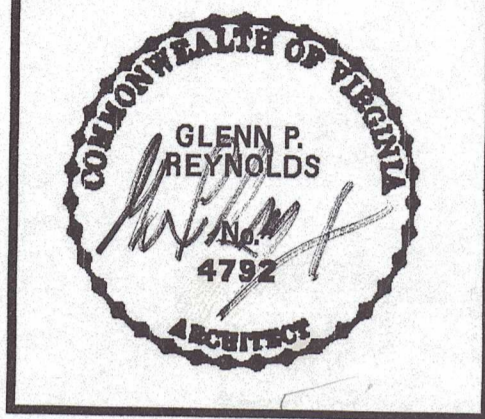
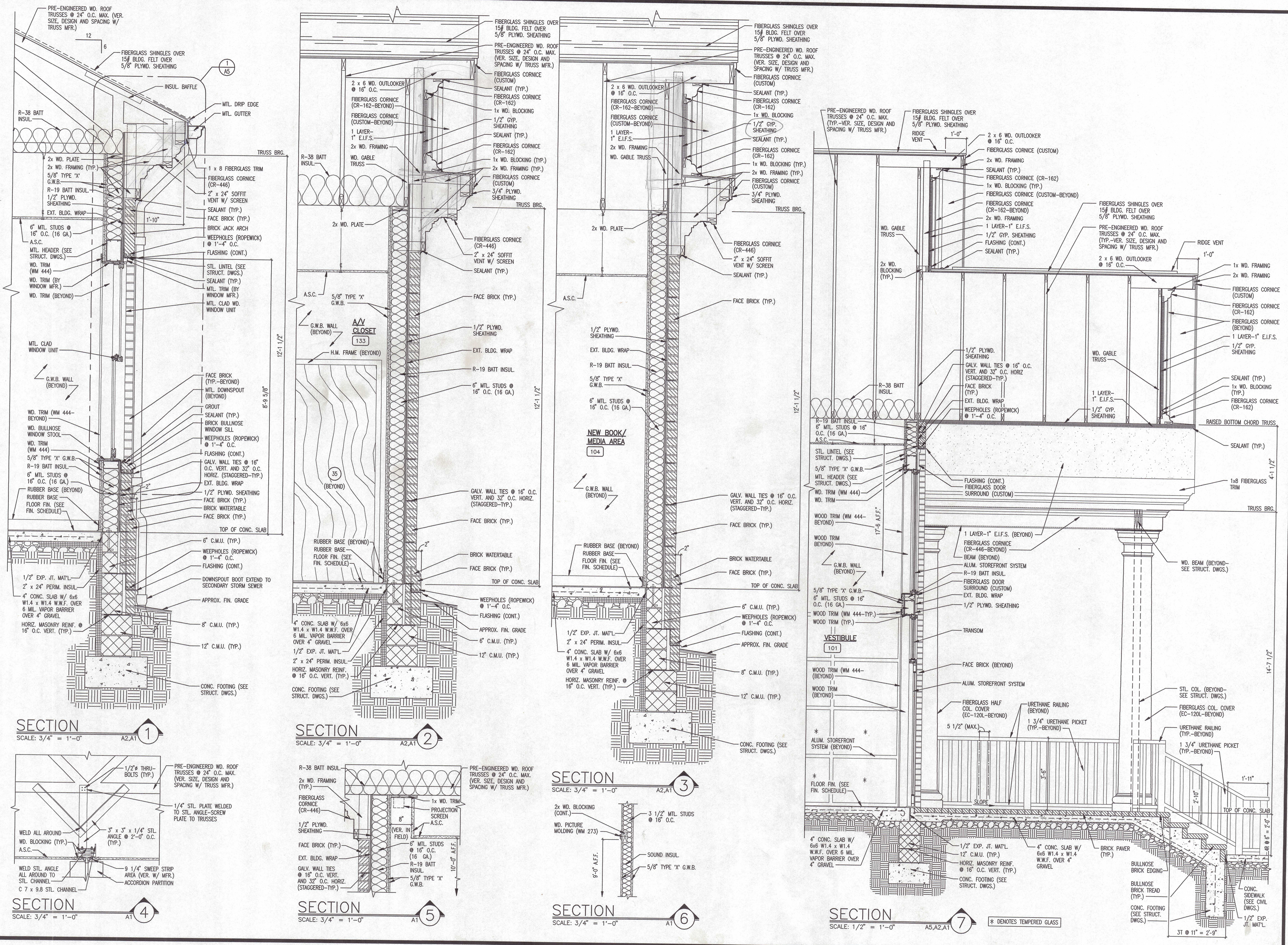
FLUVANNA COUNTY PUBLIC LIBRARY  
FLUVANNA COUNTY, VIRGINIA

SECTIONS AND DETAILS

**REYNOLDS ARCHITECTS INCORPORATED**  
BLACKSBURG, VIRGINIA

DESIGNED RA	DRAWN ABC
CHECKED GPR	APPROVED GPR
PROJECT 0422	A5
DATE 9-12-07	





FLUVANNA COUNTY PUBLIC LIBRARY  
FLUVANNA COUNTY, VIRGINIA

SECTIONS

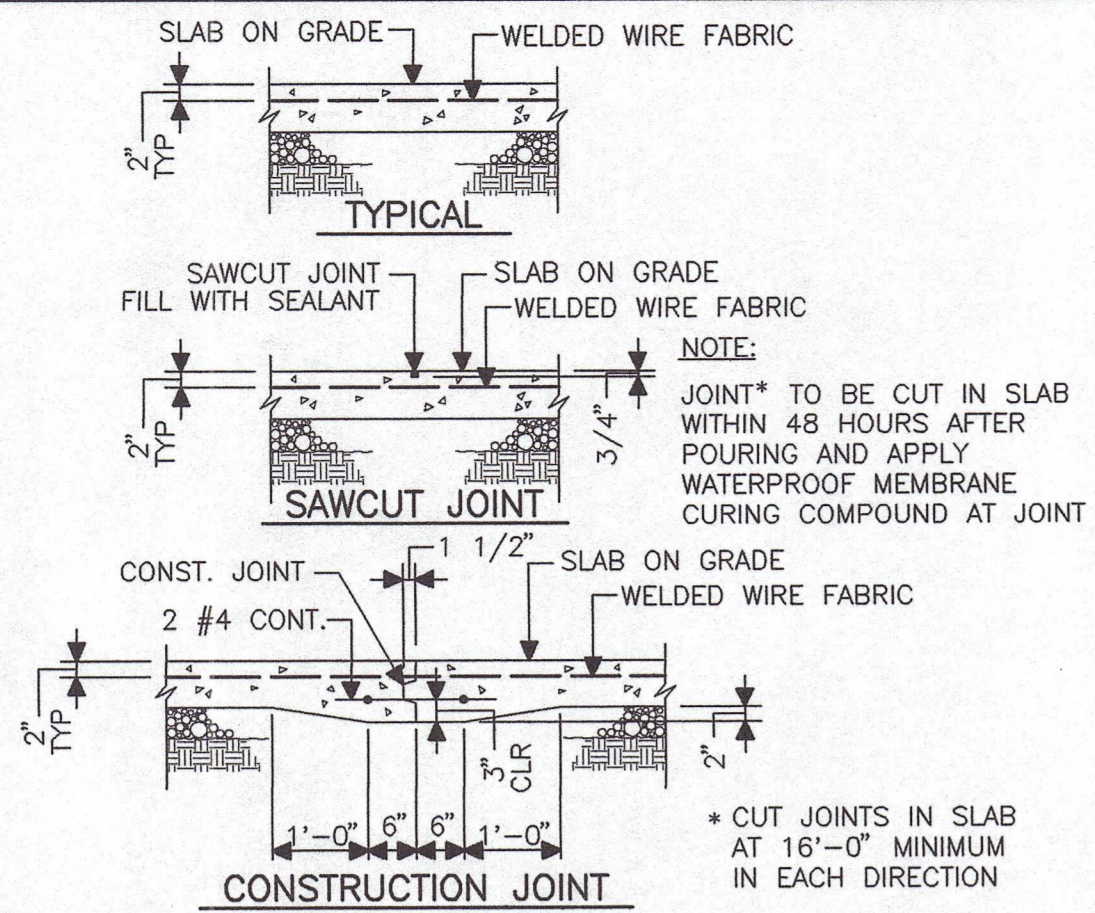


DESIGNED	RA	DRAWN	ABC
CHECKED	GPR	APPROVED	GPR
PROJECT	0422	A6	
DATE	9-12-07		

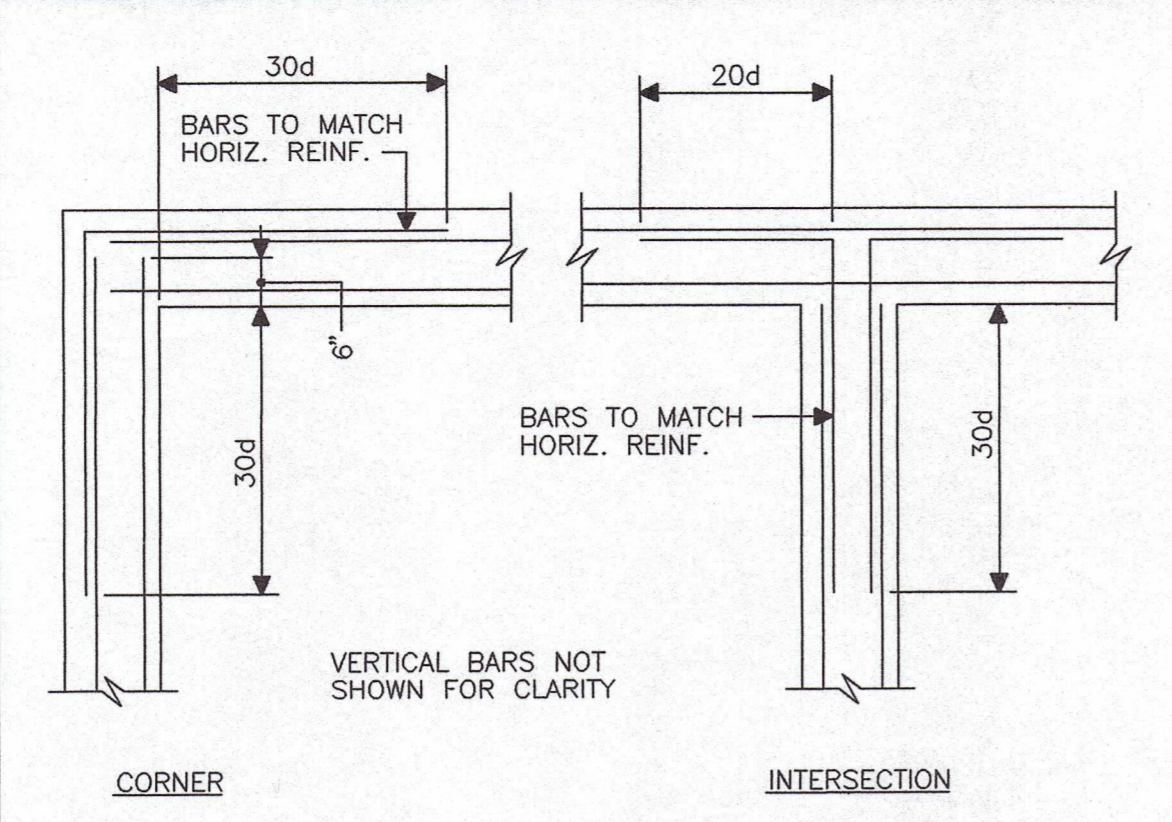




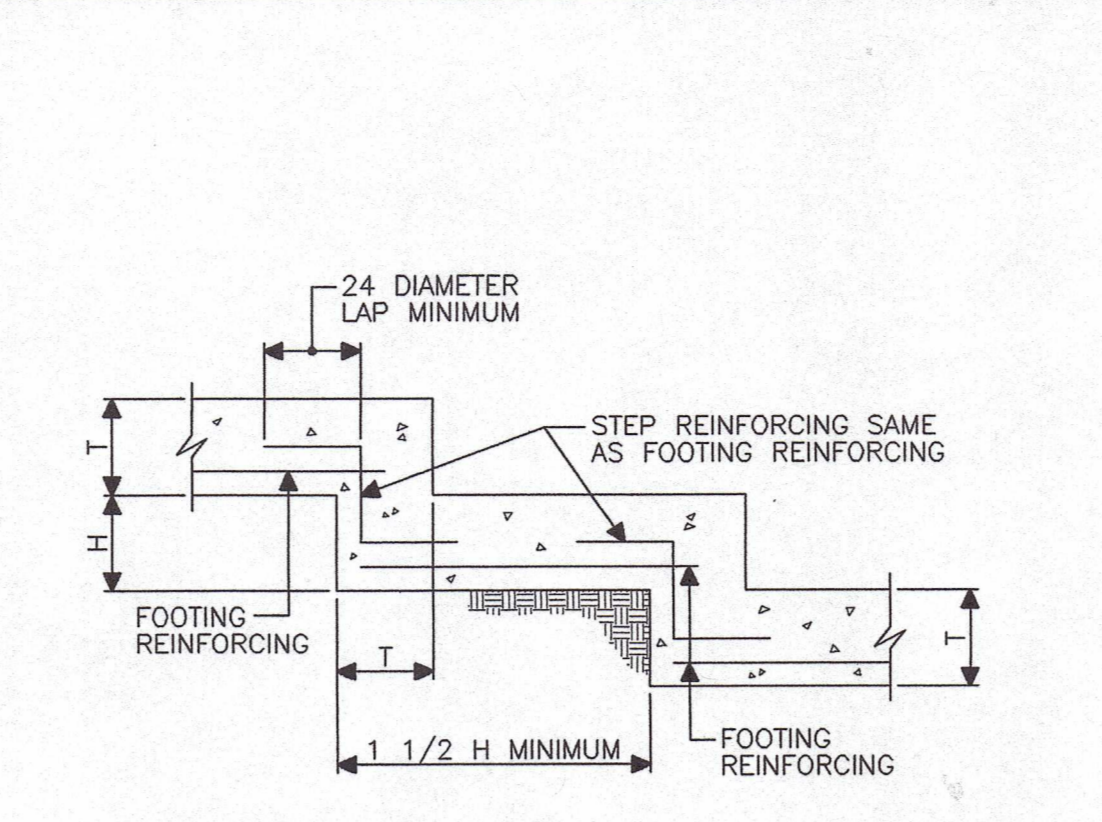




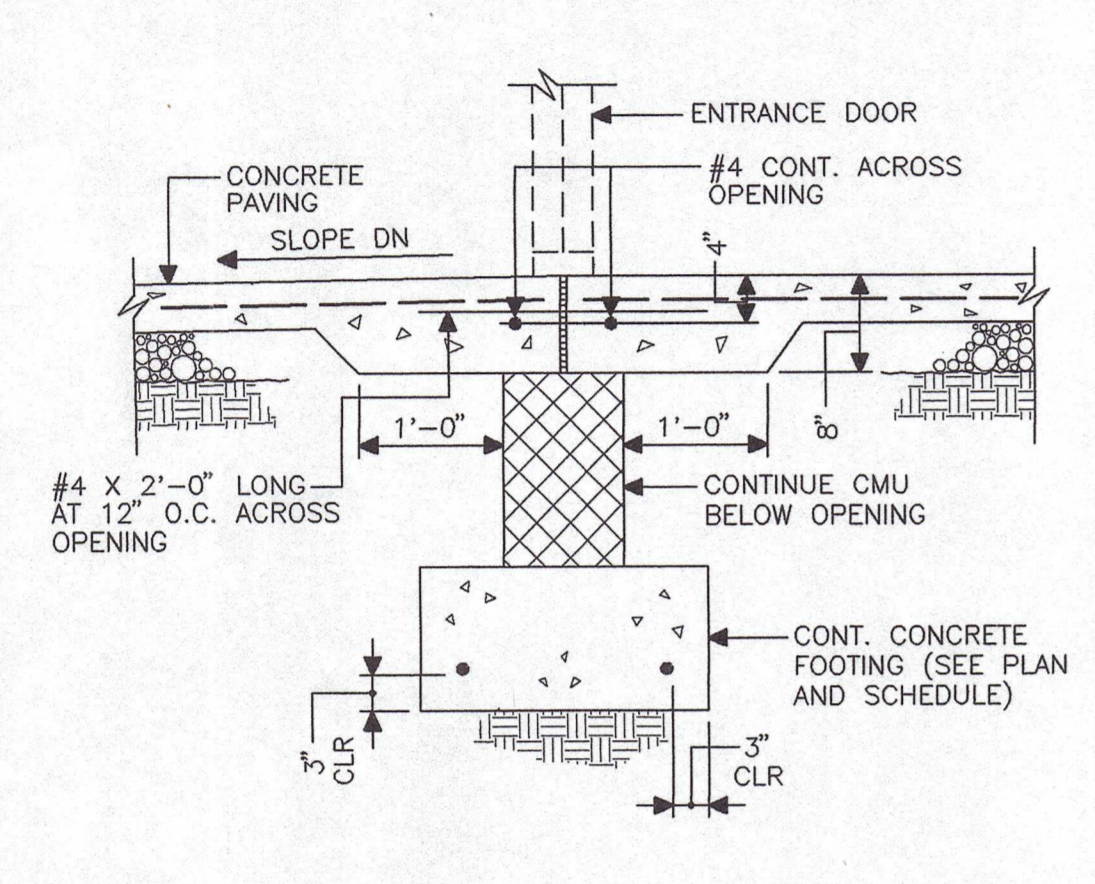
1 TYPICAL SLAB CONSTRUCTION NO SCALE



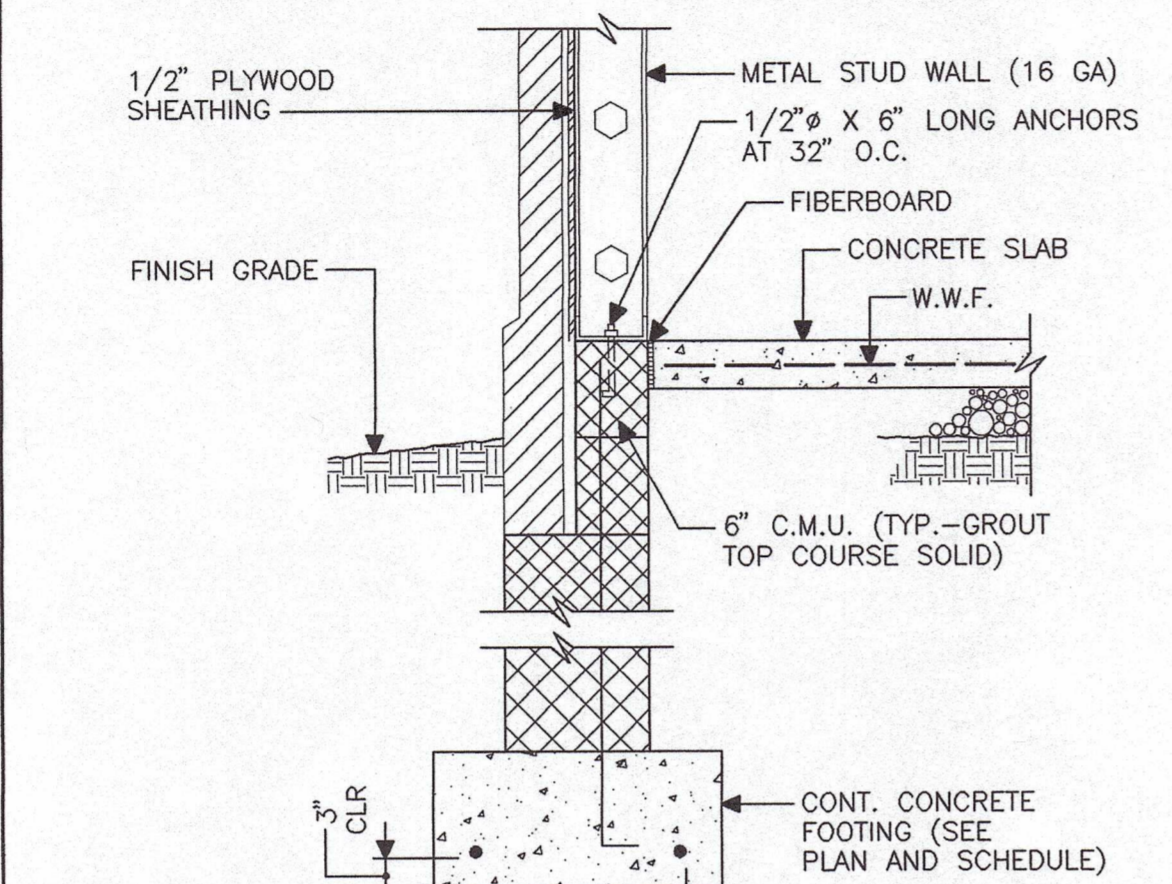
2 CORNER REINFORCING IN CONCRETE FOOTING NO SCALE



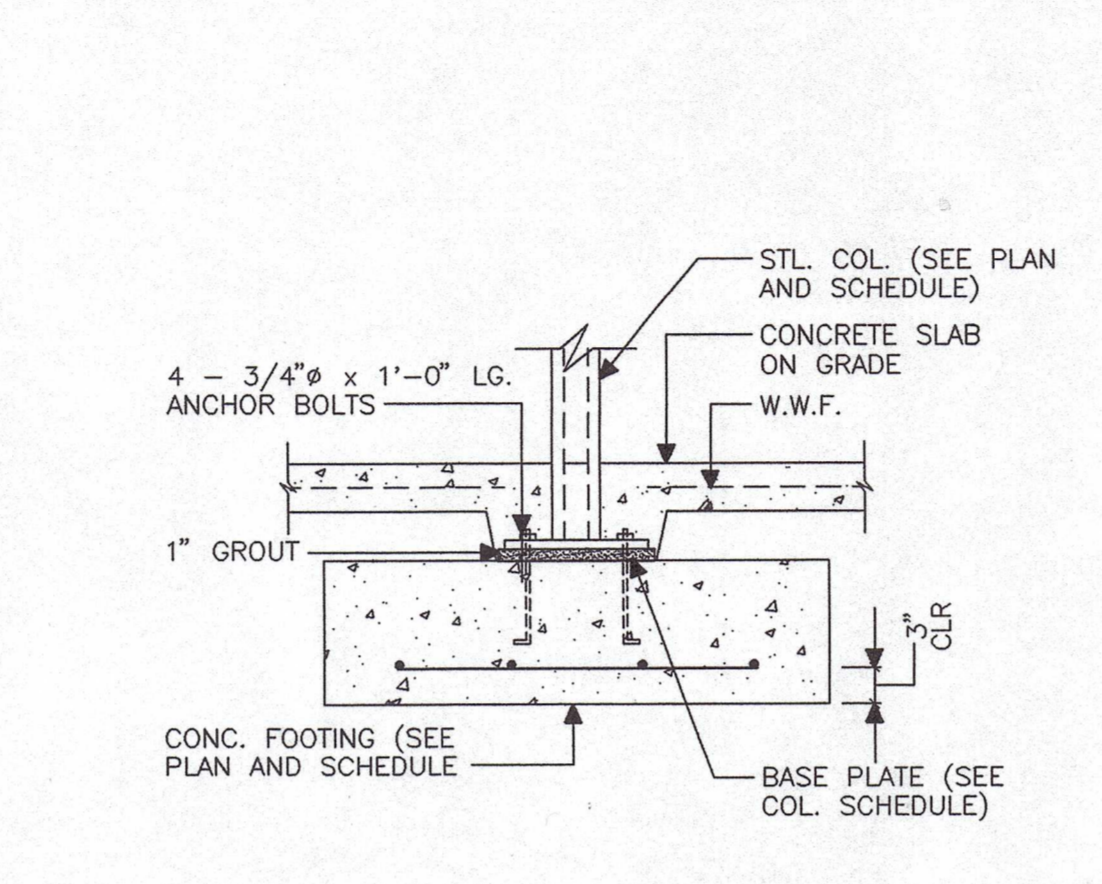
3 TYPICAL STEP FOOTING NO SCALE



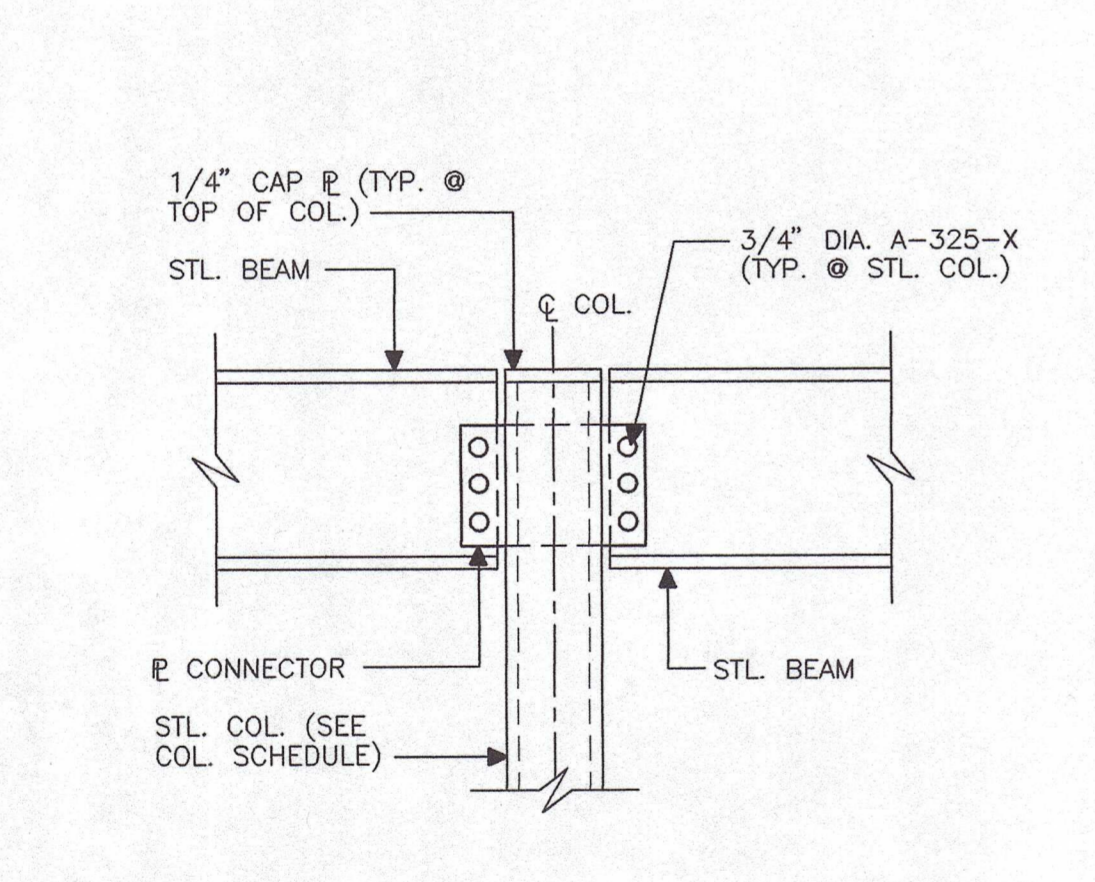
4 TYPICAL ENTRANCE SLAB SCALE: 3/4" = 1'-0"



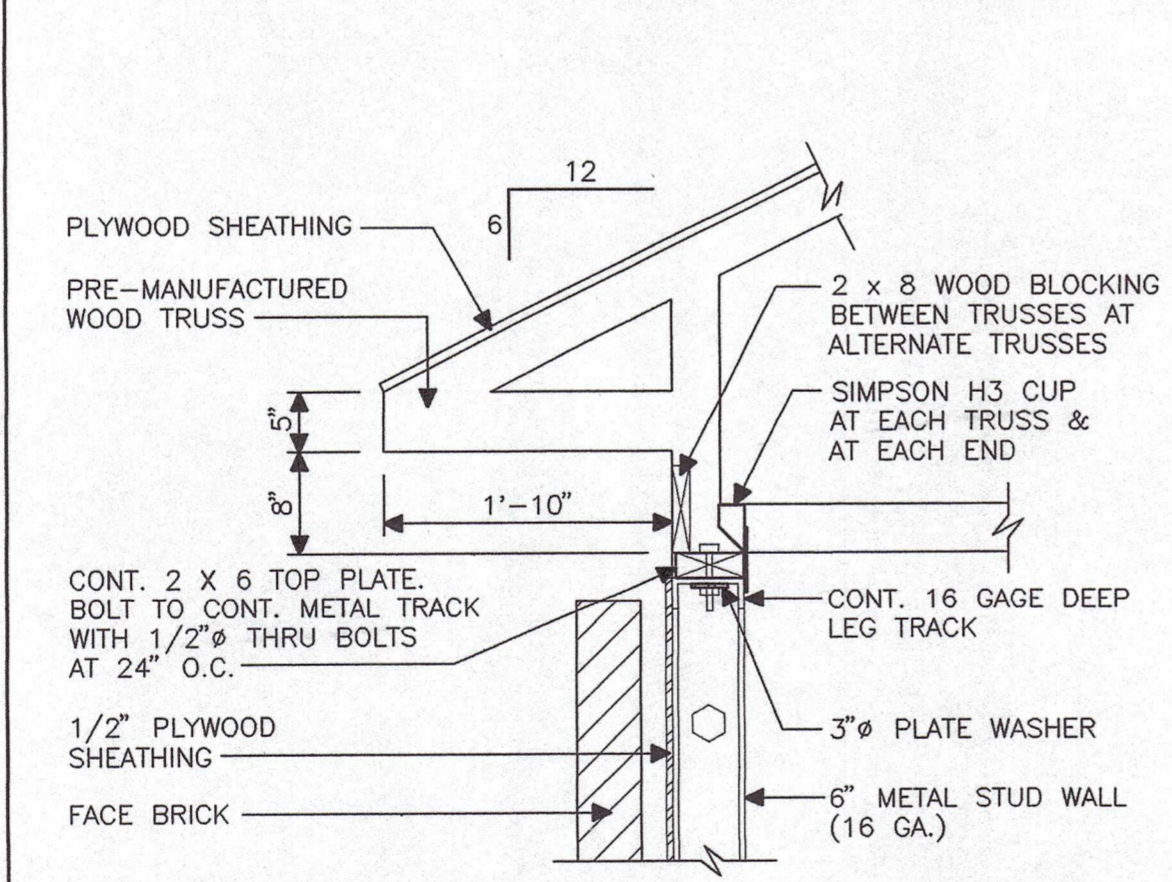
5 SECTION SCALE: 3/4" = 1'-0"



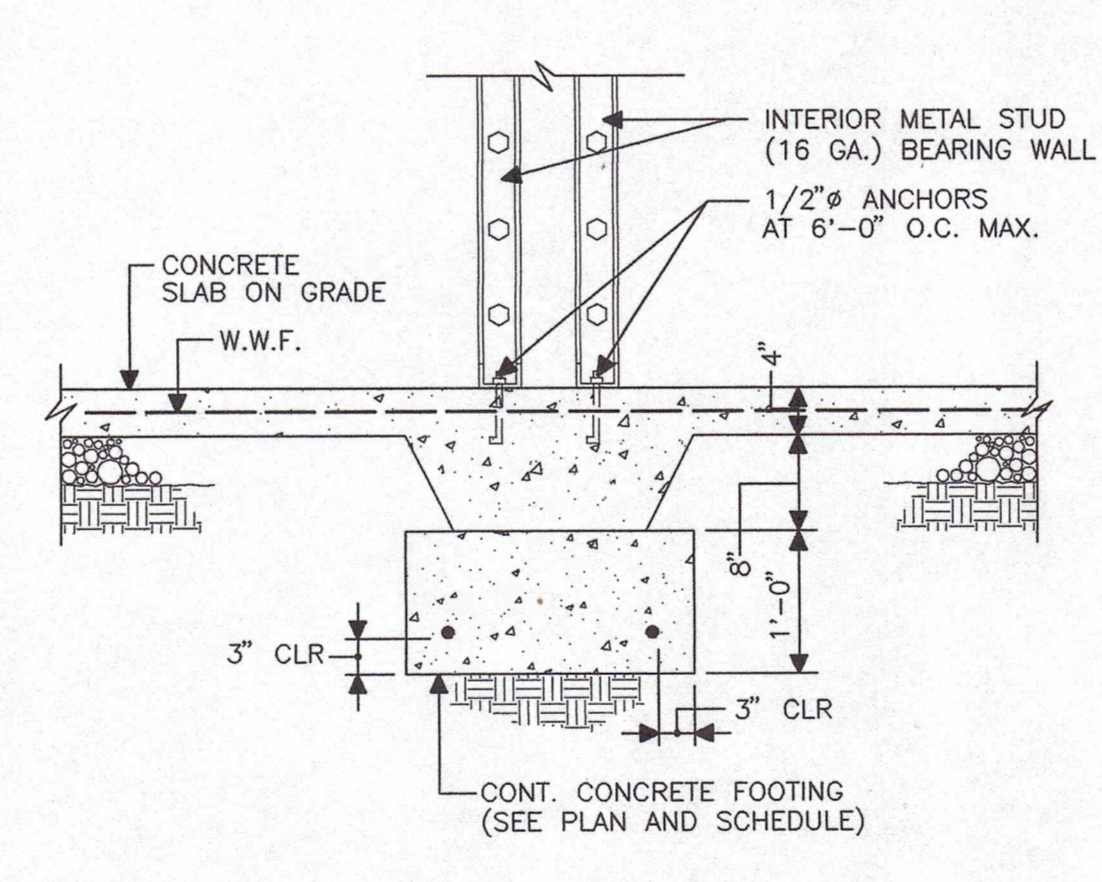
6 COLUMN FOOTING SCHEDULE SCALE: 3/4" = 1'-0"



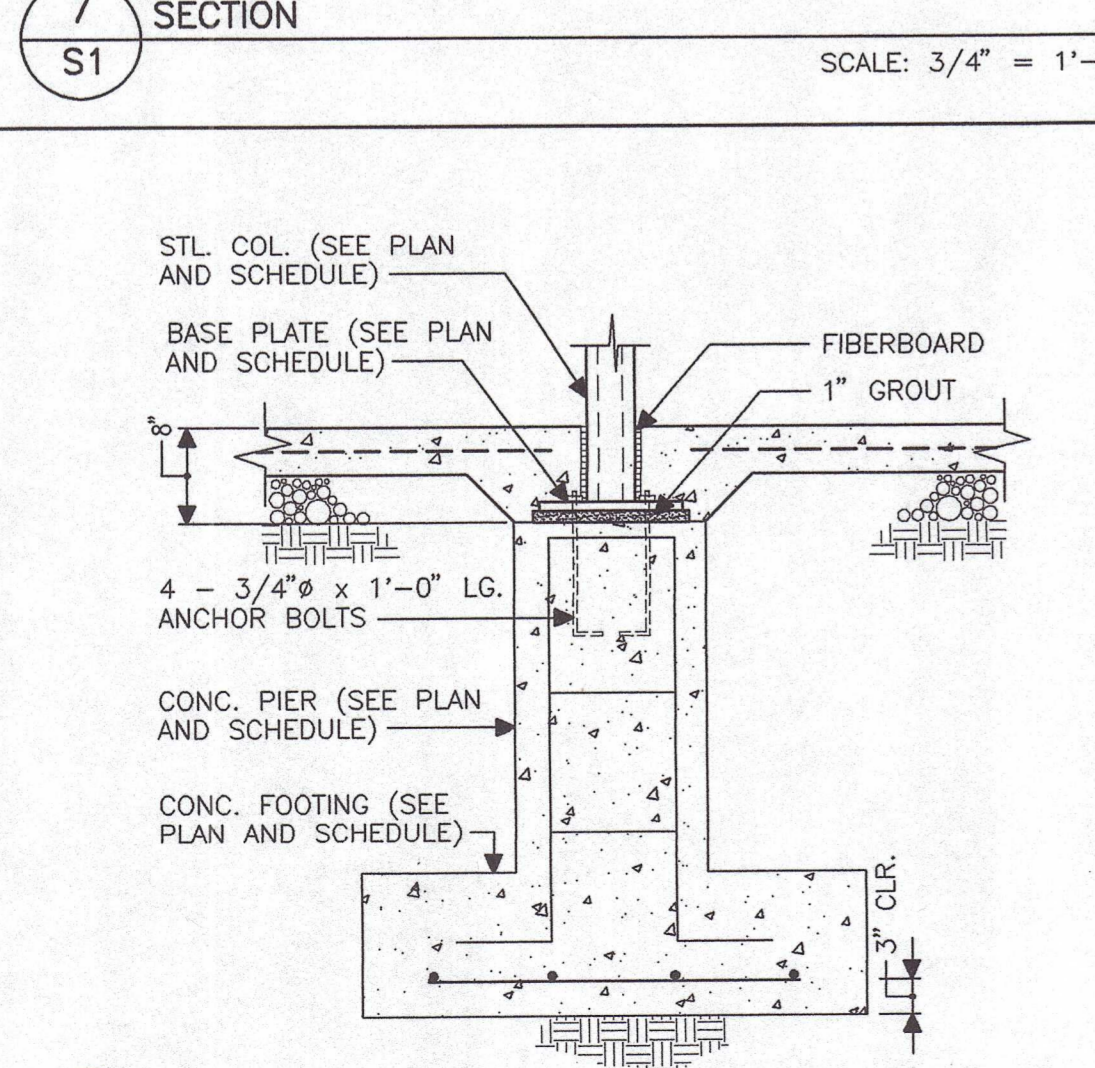
7 SECTION SCALE: 3/4" = 1'-0"



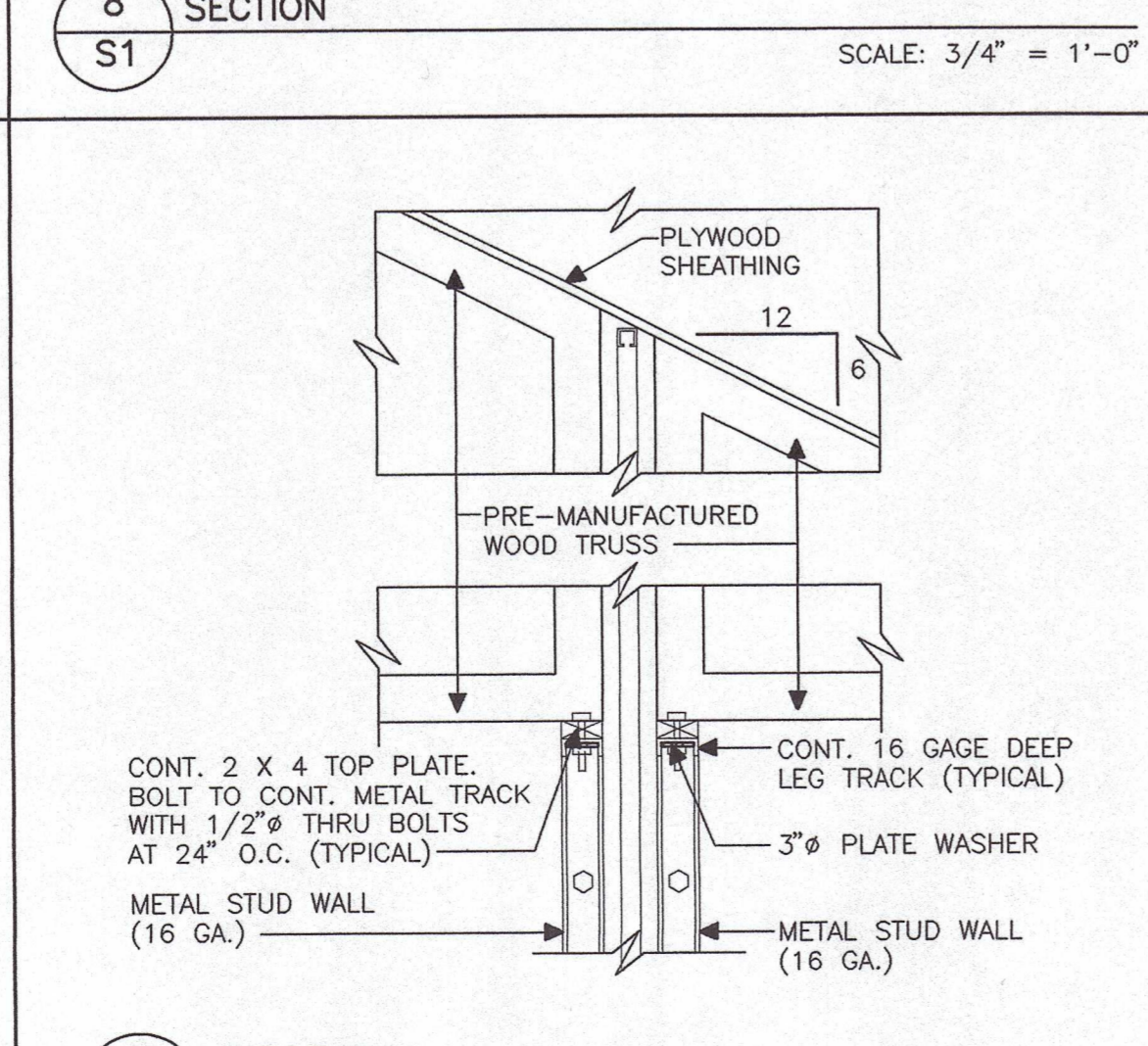
8 SECTION SCALE: 3/4" = 1'-0"



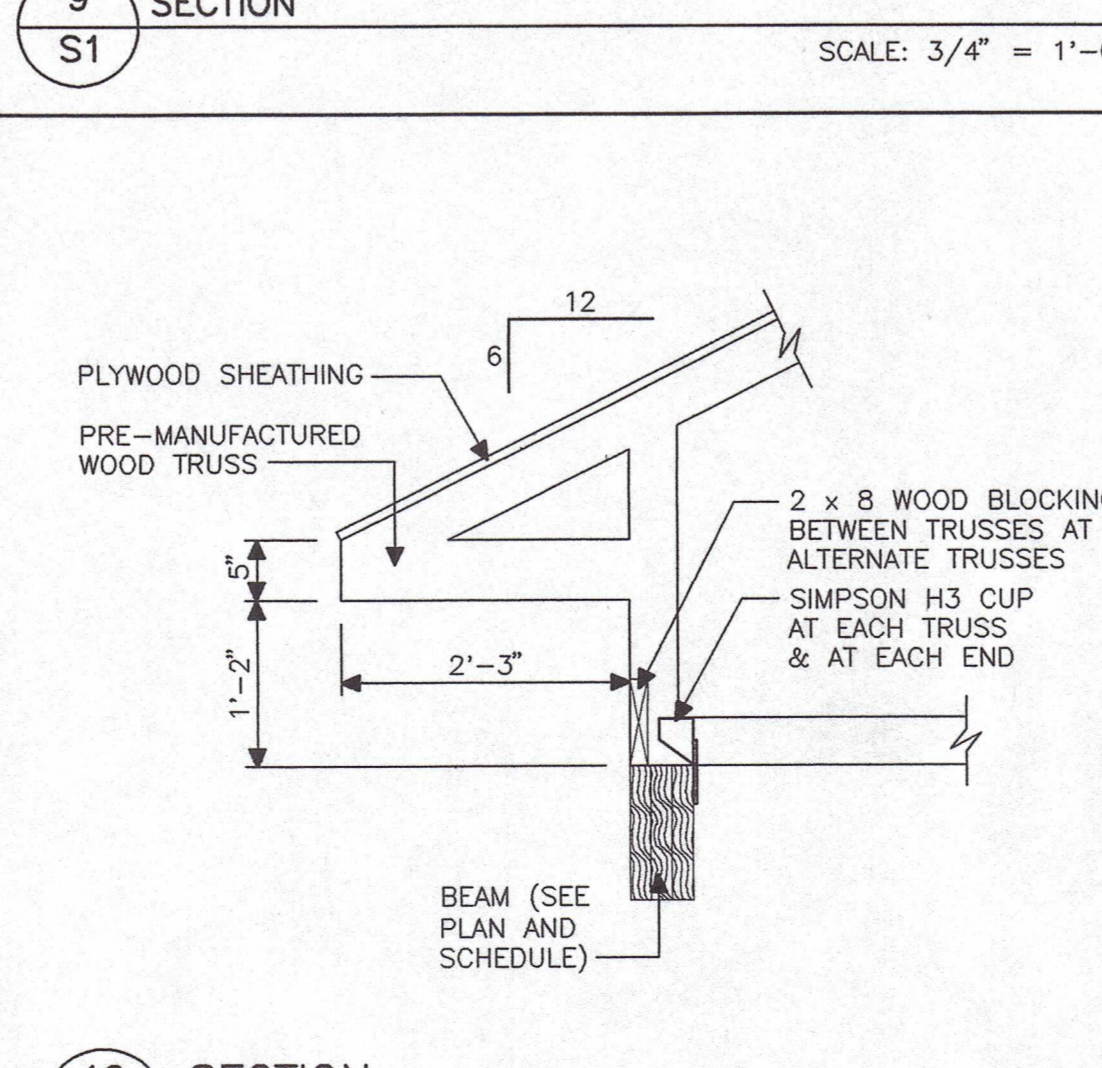
9 SECTION SCALE: 3/4" = 1'-0"



10 SECTION SCALE: 3/4" = 1'-0"



11 SECTION SCALE: 3/4" = 1'-0"



12 SECTION SCALE: 3/4" = 1'-0"

SCHEDULES

FOOTING SCHEDULE

MARK	SIZE	REINFORCING	REMARKS
F1	2'-0" X 1'-0" X CONT.	2 #5'S CONT.	----
F2	5'-0" X 5'-0" X 1'-0"	6 #5'S E.W.	----
F3	3'-6" X 3'-6" X 1'-0"	4 #5'S E.W.	----

PIER SCHEDULE

MARK	SIZE	REINFORCING	REMARKS
P1	16" X 16" CONCRETE	4 #6 VERTICAL #3 TIES AT 12" O.C.	☐

COLUMN SCHEDULE

MARK	SIZE	BASE PLATE	ANCHOR BOLTS	REMARKS
C1	TS 4 x 4 x 5/16"	2 3/4" x 12" x 12"	(4) 3/4"	NOTE 2

COLUMN NOTES:

- CAP PLATES TO BE 1/4" THICK
- PROVIDE ANCHOR BOLT EMBEDMENT OF 9" INTO CONCRETE PIER/FOOTING WITH STANDARD 3' LEG.

BEAM SCHEDULE

MARK	TYPE	SIZE	REMARKS
B1	I	W 16 x 40	----
B2	W	(3) 2 x 12'S	----
B3	LVL	5 1/4" x 11 1/4" LVL	----

HEADER SCHEDULE

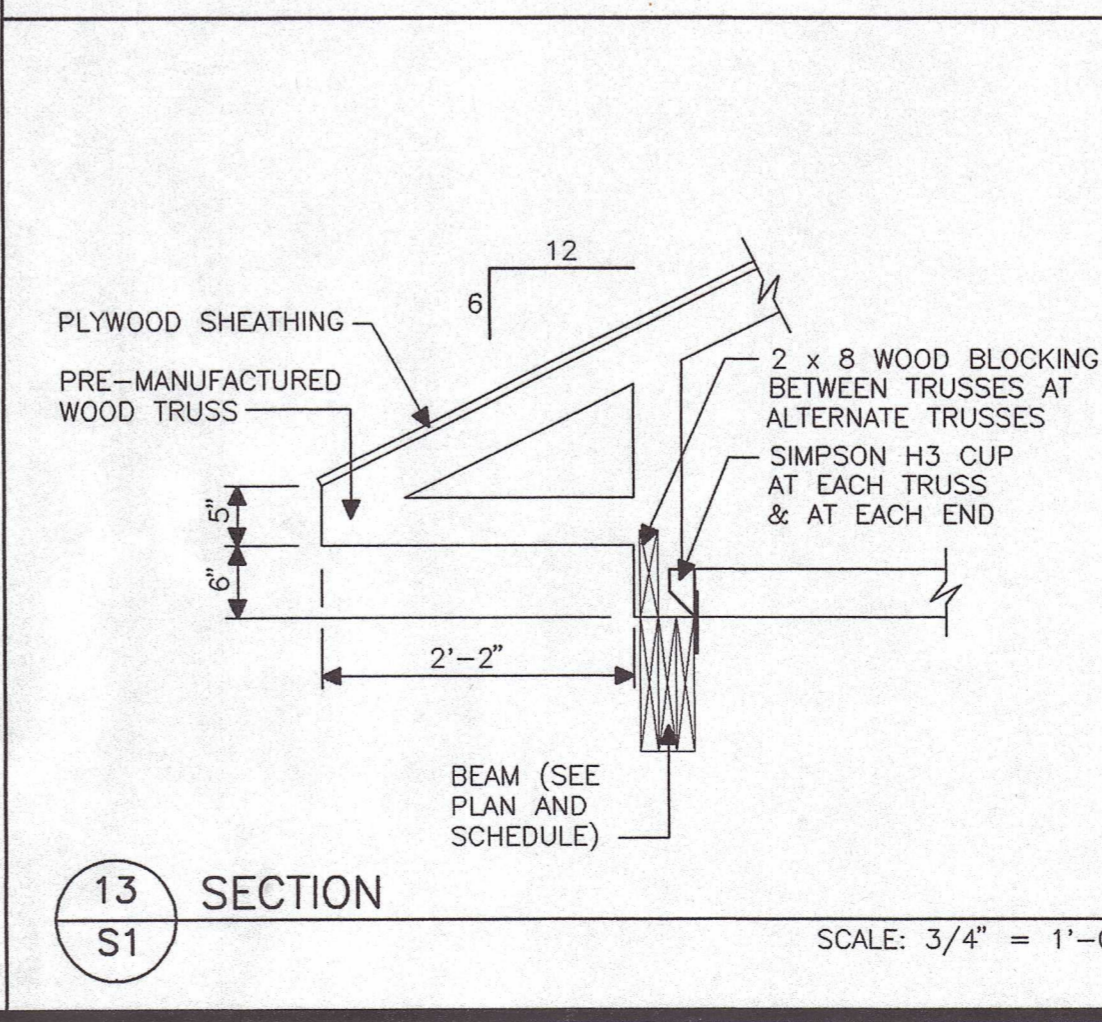
MARK	TYPE	SIZE	REMARKS
H1	CSJ	2 - 8" X 16 GAGE CSJ METAL STUDS WITH 6" X 16 GAGE TOP AND BOTTOM TRACK 3 1/2" X 3 1/2" X 3/8" BRICK LINTEL	----
H2	CSJ	2 - 10" X 16 GAGE CSJ METAL STUDS WITH 6" X 16 GAGE TOP AND BOTTOM TRACK	----
H3	CSJ	2 - 8" X 16 GAGE CSJ METAL STUDS WITH 3 5/8" X 16 GAGE TOP AND BOTTOM TRACK	----
H4	CSJ	2 - 10" X 16 GAGE CSJ METAL STUDS WITH 3 5/8" X 16 GAGE TOP AND BOTTOM TRACK	----

HEADER NOTES:

- TYPICAL BUILT-UP HEADER CONSTRUCTION SHALL BE METAL STUDS WITH CONTINUOUS TOP AND BOTTOM TRACK. PROVIDE 6" X 16 GAGE WEB STIFFENERS IN EACH HEADER MEMBER AT ALL BEARING POINTS.
- PROVIDE MINIMUM 8" BEARING ON BRICK JAMBS AT EACH END OF BRICK LINTELS.
- PROVIDE DOUBLE JACK STUDS AT EACH END TO SUPPORT HEADER, UNLESS OTHERWISE SHOWN.

LINTEL

MARK	TYPE	SIZE	REMARKS
L1	L	(2) 3 1/2" X 3 1/2" X 1/4"	----



13 SECTION SCALE: 3/4" = 1'-0"

GENERAL STRUCTURAL NOTES

CODE: 2003 VIRGINIA UNIFORM STATEWIDE BUILDING CODE

DESIGN LOADS

ROOF LOADS: ROOF LIVE LOAD = 30 PSF (SNOW), DRIFTS APPLIED PER CODE  
GROUND SNOW LOAD = 30 PSF  
SNOW EXPOSURE FACTOR = 1.0  
SNOW LOAD IMPORTANCE FACTOR = 1.0  
THERMAL FACTOR = 1.0

WIND LOADS: BASIC WIND SPEED = 90 MPH (3 SECOND GUST)  
WIND LOAD IMPORTANCE FACTOR = 1.15  
WIND EXPOSURE FACTOR 'C'

SEISMIC LOADS: SEISMIC IMPORTANCE FACTOR = 1.15  
S<sub>s</sub> = 0.35g, S<sub>i</sub> = 0.10g  
SITE CLASSIFICATION = 'D'  
SEISMIC DESIGN CATEGORY = "C"  
EQUIVALENT LATERAL FORCE PROCEDURE

SHEETS S1 THRU S3 ARE STRUCTURAL DESIGN DRAWINGS ONLY (REQUIRED FOR FOUNDATION PLAN, ROOF FRAMING PLAN AND SCHEDULES). ANY REFERENCE TO ARCHITECTURAL MATERIALS, SYSTEMS, OR CONCEPTS IS FOR CLARITY ONLY.

ALL FILL AND UNSUITABLE FOUNDATION MATERIAL SHALL BE REMOVED AND FOOTINGS SHALL REST ON UNDISTURBED SOIL OR ENGINEERED FILL AS DIRECTED BY THE CONTRACTOR'S GEOTECHNICAL ENGINEER.

FOOTINGS ARE DESIGNED FOR A MINIMUM SOIL BEARING CAPACITY OF 2000 P.S.F. BASED ON PRIOR CONSTRUCTION DOCUMENTS.

ALL EXTERIOR CONCRETE EXPOSED TO WEATHER SHALL BE 4000 P.S.I., AIR-ENTRAINED. ALL OTHER CONCRETE SHALL BE 4000 P.S.I. ALL MATERIALS AND PROCESSES TO THIS END SHALL CONFORM IN GENERAL TO A.C.I. RECOMMENDED PRACTICE FOR THE DESIGN OF CONCRETE MIXES. (A.C.I.-613 LAST REVISED)

PROVIDE 3/4" CHAMFER ON EXPOSED CONCRETE EDGES.

UNLESS NOTED OTHERWISE, ALL FLOOR SLABS ON GRADE SHALL BE 4" THICK AND SHALL BE REINFORCED WITH ONE LAYER OF 6 X 6 - W1.4 X W1.4 W.W.F.

DEPRESS ALL FLOOR SLABS AS REQUIRED FOR FLOOR FINISHES. SEE ARCHITECTURAL DRAWINGS.

CONTRACTOR SHALL PLACE 1/2" ASPHALT IMPREGNATED FIBERBOARD IN JOINTS OF CONCRETE SLAB ON GRADE AGAINST VERTICAL SURFACES.

STEEL REINFORCING SHALL BE BILLET STEEL ASTM A-615, GRADE 60.

MESH SHALL BE WELDED WIRE FABRIC ASTM A-185.

ROUND STEEL PIPE SHALL CONFORM TO THE REQUIREMENTS OF ASTM A-501. SQUARE AND RECTANGULAR STEEL TUBING SHALL CONFORM TO THE REQUIREMENTS OF ASTM A-500, GRADE B. ALL STEEL FOR BEAMS AND COLUMNS SHALL BE ASTM A992, F<sub>y</sub> = 50 KSI. ALL OTHER STRUCTURAL STEEL SHALL CONFORM TO THE REQUIREMENTS OF ASTM A-36. ALL STEEL SHALL RECEIVE ONE COAT OF SHOP PAINT, UNLESS NOTED OTHERWISE.

CUTS, HOLES, COPINGS, ETC. IN STRUCTURAL STEEL MEMBERS REQUIRED BY WORK OF OTHER TRADES SHALL BE MADE IN THE SHOP AND SHALL BE SHOWN ON THE SHOP DRAWINGS. BURNING OF HOLES OR CUTS IN THE FIELD WILL NOT BE PERMITTED WITHOUT SPECIFIC APPROVAL OF THE ENGINEER.

UNLESS NOTED OTHERWISE, ALL BEAM SHEAR CONNECTIONS SHALL BE DESIGNED FOR ONE HALF THE ALLOWABLE UNIFORMLY DISTRIBUTED LOADING IN ACCORDANCE WITH THE UNIFORM LOAD CONSTANTS AS TABULATED IN THE AISC MANUAL (NINTH EDITION) FOR THE INDICATED SPAN PLUS 2 KIPS.

ALL BOLTS SHALL BE 3/4" DIAMETER, ASTM A-325, UNLESS OTHERWISE SHOWN OR NOTED.

ALL LINTELS TO HAVE 8" MINIMUM BEARING ON SOLID GROUTED MASONRY UNITS, UNLESS NOTED OTHERWISE.

PROVIDE ANGLE 3 1/2" X 3 1/2" X 1/4" FOR EACH 4" OF MASONRY WALL THICKNESS OVER GRILLES, LOUVERS, PANEL BOXES, DUCTS AND OTHER MISCELLANEOUS OPENINGS NOT SHOWN.

ALL DIMENSIONS SHOWN ON THIS DRAWING SHALL BE VERIFIED BY THE CONTRACTOR AT THE PROJECT SITE PRIOR TO COMMENCING CONSTRUCTION OR FABRICATION OF BUILDING ELEMENTS.

WOOD TRUSSES SHALL BE FABRICATED IN ACCORDANCE WITH THE FOLLOWING DESIGN CRITERIA. TRUSS BRACING SHALL CONFORM TO THE REQUIREMENTS OF STANDARDS FOR THE DESIGN OF STRUCTURAL TIMBER FRAMING, AND TRUSS PLATE INSTITUTE.

WOOD ROOF TRUSS DESIGN CRITERIA:

TOP CHORD	LIVE LOAD	30 PSF
TOP CHORD	DEAD LOAD	10 PSF
BOTTOM CHORD	LIVE LOAD	0 PSF
BOTTOM CHORD	DEAD LOAD	10 PSF

LIMIT LIVE LOAD DEFLECTION TO SPAN/360.

THE DESIGN AND FABRICATION SHALL MEET THE LATEST OF THE FOLLOWING SPECIFICATIONS:

- THE NATIONAL DESIGN SPECIFICATIONS FOR STRESS GRADE LUMBER AND ITS FASTENINGS BY NFPA.
- TIMBER CONSTRUCTION MANUAL, AITC.
- DESIGN SPECIFICATIONS FOR LIGHT METAL PLATE CONNECTED WOOD TRUSSES. TRUSS PLATE INSTITUTE.

ALL LIGHT GAGE BEARING WALL METAL STUDS SHALL BE FORMED OF SHEET STEEL CONFORMING TO ASTM A-446 OR A-570. ALL 14 AND 16 GAGE METAL STUDS SHALL HAVE A MINIMUM YIELD POINT OF 50,000 PSI. ALL 18 AND 20 GAGE METAL STUDS SHALL HAVE A MINIMUM YIELD POINT OF 33,000 PSI. ALL SHEAR WALL STRAPPING MATERIAL SHALL HAVE A MINIMUM YIELD POINT OF 50,000 PSI. FINISH FOR ALL LIGHT GAGE MATERIAL SHALL BE HOT-DIPPED GALVANIZED COMPLYING WITH ASTM A-525 FOR A MINIMUM G60 FINISH.

METAL STUD BEARING WALL INSTALLER SHALL PROVIDE ALL STEEL TRACKS, BLOCKING, LINTELS, CLIP ANGLES, SHOES, STIFFENERS, FASTENERS, AND ACCESSORIES AS INDICATED OR AS RECOMMENDED BY THE MATERIAL MANUFACTURER TO PROVIDE A COMPLETE METAL FRAMING SYSTEM.

METAL STUDS SPECIFIED ON THESE DRAWINGS ARE BASED ON THE PROPERTIES OF STUDS MANUFACTURED BY DIETRICH. ALL STUDS PROVIDED FOR CONSTRUCTION SHALL MEET THOSE MINIMUM PROPERTIES.

ALL EXTERIOR METAL STUDS SHALL BE 6" X 16 GAGE CSJ AT 1'-4" O.C. UNLESS OTHERWISE NOTED.

NO. REVISIONS DATE

DAY & KINDER CONSULTING ENGINEERS, PLLC  
P.O. BOX 20187  
3239 ELECTRIC ROAD, SUITE # 2  
ROANOKE, VIRGINIA 24018  
PHONE: 540 774-5706  
FAX: 540 772-3266  
COMM. NO. 07-258

STATE OF VIRGINIA  
JAMES F. KINDER, JR.  
No. 015761  
9-12-07  
PROFESSIONAL ENGINEER

FLUVANNA COUNTY PUBLIC LIBRARY  
FLUVANNA COUNTY, VIRGINIA

GENERAL STRUCTURAL NOTES, SCHEDULES  
SECTIONS AND DETAILS

REYNOLDS ARCHITECTS INCORPORATED  
BLACKSBURG, VIRGINIA

DESIGNED JFK DRAWN ABC  
CHECKED JFK APPROVED JFK  
PROJECT 0422  
DATE 9-12-07

S1